

# Recombinant Human DDT Protein, Myc/DDK-tagged, C13 and N15-labeled

**Cat. No.** DDT-1001H    **Lot. No.** (See product label)

## SPECIFICATION

<b>Product Overview</b>	DDT MS Standard C13 and N15-labeled recombinant protein (NP_001077861) with a C-terminal MYC/DDK tag, was expressed in HEK293 cells.
<b>Species</b>	Human
<b>Source</b>	HEK293
<b>Description</b>	D-dopachrome tautomerase converts D-dopachrome into 5,6-dihydroxyindole. The DDT gene is related to the migration inhibitory factor (MIF) in terms of sequence, enzyme activity, and gene structure. DDT and MIF are closely linked on chromosome 22.
<b>Molecular Mass</b>	12.7 kDa
<b>AA Sequence</b>	MPFLELDTNLPANRV PAGLEKRLCAAASILGKPADRVNVTVRPGLAMALSGSTEPCAQLSISSIGVVGTAEDNRSHSAHFFFLTKELALGQDRILIRFFPLESWQIGKIGTVMTFLTRTRPLEQKLISEEDLAANDILDYKDDDDKV
<b>Purity</b>	> 80% as determined by SDS-PAGE and Coomassie blue staining
<b>Stability</b>	Stable for 3 months from receipt of products under proper storage and handling conditions.
<b>Storage</b>	Store at -80 centigrade. Avoid repeated freeze-thaw cycles.

 Tel: 1-631-559-9269    1-516-512-3133

 Email: [info@creative-biomart.com](mailto:info@creative-biomart.com)     Fax: 1-631-938-8127

 45-1 Ramsey Road, Shirley, NY 11967, USA

**Concentration** 50 µg/mL as determined by BCA

**Storage Buffer** 100 mM glycine, 25 mM Tris-HCl, pH 7.3.

## GENE INFORMATION

**Gene Name** DDT D-dopachrome tautomerase [ Homo sapiens (human) ]

**Official Symbol** DDT

**Synonyms** DDT; D-dopachrome tautomerase; D-dopachrome decarboxylase; D dopachrome decarboxylase; DDCT; phenylpyruvate tautomerase II; FLJ78842;

**Gene ID** 1652

**mRNA Refseq** NM\_001084392

**Protein Refseq** NP\_001077861

**MIM** 602750

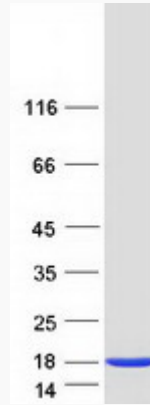
**UniProt ID** P30046

 Tel: 1-631-559-9269 1-516-512-3133

 Email: [info@creative-biomart.com](mailto:info@creative-biomart.com)  Fax: 1-631-938-8127

 45-1 Ramsey Road, Shirley, NY 11967, USA

**SDS-PAGE**



 Tel: 1-631-559-9269 1-516-512-3133

 Email: [info@creative-biomart.com](mailto:info@creative-biomart.com)  Fax: 1-631-938-8127

 45-1 Ramsey Road, Shirley, NY 11967, USA