

Recombinant Human DDT protein, His-tagged

Cat. No. DDT-137H Lot. No. (See product label)

SPECIFICATION

Product Overview	Recombinant Human DDT protein(P30046-1)(Pro2-Leu118) is expressed from E.coli with His tag at the N-Terminus.
Species	Human
Source	E.coli
ProteinLength	Pro2-Leu118
Form	Supplied as 0.22µm filtered solution in 50mM Tris, 200mM NaCl, 10% Glycerol (pH 8.0).
Molecular Mass	The protein has a predicted MW of 13.94 kDa same as Tris-Bis PAGE result.
Endotoxin	Less than 1EU per µg by the LAL method.
Purity	> 95% as determined by Tris-Bis PAGE > 95% as determined by HPLC
Storage	Valid for 12 months from date of receipt when stored at -80°C. Recommend to aliquot the protein into smaller quantities for optimal storage. Please minimize freeze-thaw cycles.
Reconstitution	It is recommended that sterile water be added to the vial to prepare a stock solution of 0.2 ug/ul. Centrifuge the vial at 4°C before opening to recover the entire contents.

 Tel: 1-631-559-9269 1-516-512-3133

 Email: info@creative-biomart.com  Fax: 1-631-938-8127

 45-1 Ramsey Road, Shirley, NY 11967, USA

GENE INFORMATION

Gene Name DDT D-dopachrome tautomerase [Homo sapiens]

Official Symbol DDT

Synonyms DDT; D-dopachrome tautomerase; D-dopachrome decarboxylase; D dopachrome decarboxylase; DDCT; phenylpyruvate tautomerase II; FLJ78842

Gene ID 1652

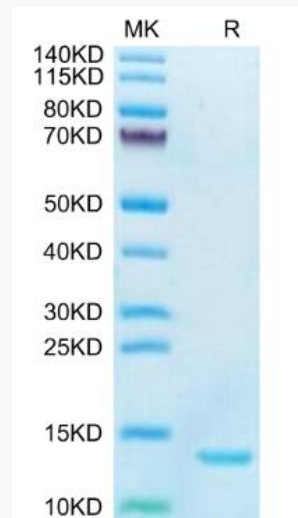
mRNA Refseq NM_001084392

Protein Refseq NP_001077861

MIM 602750

UniProt ID P30046

Tris-Bis PAGE



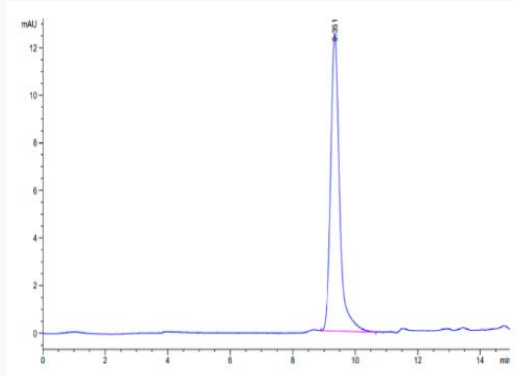
Tel: 1-631-559-9269 1-516-512-3133

Email: info@creative-biomart.com Fax: 1-631-938-8127

45-1 Ramsey Road, Shirley, NY 11967, USA



SEC-HPLC



Tel: 1-631-559-9269 1-516-512-3133

Email: info@creative-biomart.com Fax: 1-631-938-8127

45-1 Ramsey Road, Shirley, NY 11967, USA