

Recombinant Human DDT Protein, Myc/DDK-tagged, C13 and N15-labeled

Cat. No. DDT-3434H **Lot. No.** (See product label)

SPECIFICATION

Product Overview	DDT MS Standard C13 and N15-labeled recombinant protein (NP_001346) with a C-terminal MYC/DDK tag, was expressed in HEK293 cells.
Species	Human
Source	HEK293
Description	D-dopachrome tautomerase converts D-dopachrome into 5,6-dihydroxyindole. The DDT gene is related to the migration inhibitory factor (MIF) in terms of sequence, enzyme activity, and gene structure. DDT and MIF are closely linked on chromosome 22.
Molecular Mass	12.7 kDa
AA Sequence	MPFLELDTNLPANRV PAGLEKRLCAAASILGKPADRVNVTVRPGLAMALSGSTEPCAQLSISSIGVVGTAE DNRS SHAHFFFLTKELALGQDRILIRFFPLESWQIGKIGTVMTFLTRTRPLEQKLISEEDLAANDILDYKDDDDKV
Purity	> 80% as determined by SDS-PAGE and Coomassie blue staining
Stability	Stable for 3 months from receipt of products under proper storage and handling conditions.
Storage	Store at -80 centigrade. Avoid repeated freeze-thaw cycles.

 Tel: 1-631-559-9269 1-516-512-3133

 Email: info@creative-biomart.com  Fax: 1-631-938-8127

 45-1 Ramsey Road, Shirley, NY 11967, USA

Concentration 50 µg/mL as determined by BCA

Storage Buffer 100 mM glycine, 25 mM Tris-HCl, pH 7.3.

GENE INFORMATION

Gene Name DDT D-dopachrome tautomerase [Homo sapiens (human)]

Official Symbol DDT

Synonyms DDT; D-dopachrome tautomerase; D-dopachrome decarboxylase; D dopachrome decarboxylase; DDCT; phenylpyruvate tautomerase II; FLJ78842;

Gene ID 1652

mRNA Refseq NM_001355

Protein Refseq NP_001346

MIM 602750

UniProt ID P30046

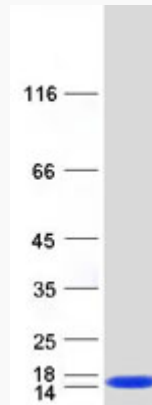
 Tel: 1-631-559-9269 1-516-512-3133

 Email: info@creative-biomart.com  Fax: 1-631-938-8127

 45-1 Ramsey Road, Shirley, NY 11967, USA



SDS-PAGE



Tel: 1-631-559-9269 1-516-512-3133

Email: info@creative-biomart.com Fax: 1-631-938-8127

45-1 Ramsey Road, Shirley, NY 11967, USA