

Recombinant Human DDX25 Protein, GST-tagged

Cat. No. DDX25-2478H Lot. No. (See product label)

SPECIFICATION

Product Overview	Human DDX25 full-length ORF (AAH50360, 1 a.a. - 483 a.a.) recombinant protein with GST-tag at N-terminal.
Species	Human
Source	Wheat Germ
Description	<p>DEAD box proteins, characterized by the conserved motif Asp-Glu-Ala-Asp (DEAD), are putative RNA helicases. They are implicated in a number of cellular processes involving alteration of RNA secondary structure, such as translation initiation, nuclear and mitochondrial splicing, and ribosome and spliceosome assembly. Based on their distribution patterns, some members of the DEAD box protein family are believed to be involved in embryogenesis, spermatogenesis, and cellular growth and division. This gene encodes a member of this family. The encoded protein is a gonadotropin-regulated and developmentally expressed testicular RNA helicase. It may serve to maintain testicular functions related to steroidogenesis and spermatogenesis.</p> <p>[provided by RefSeq, Jul 2008]</p>
Molecular Mass	78.87 kDa
AA Sequence	<p>MASLLWGGDAGAAESERLNSHFSNLSQPRKNLWGIKSTAVRNIDGSINNINEDDEE DVVDLAANSLNKLHQLVESHHRVEVLQKDPSSPLYSVKTFEELRLKEELLKGIYA MGFNRPSKIQEMALPMMLAHPPQNLIQSQSGTGKTAAFVLAMLSRVNALELFPQC LCLAPTYELALQTGRVVEQMGKFCVDVQVMYAIRGNRIPRGTDITKQIIIGTPGTVLD</p>

 Tel: 1-631-559-9269 1-516-512-3133

 Email: info@creative-biomart.com  Fax: 1-631-938-8127

 45-1 Ramsey Road, Shirley, NY 11967, USA

WCFKLLKIDLTKIRVFLDEADVMIDTQGFSHSIRIQRALPSECQMLLFSATFEDSV
 WHFAERIIPDPNVIKLRKEELTLNNIRQYYVLCEHRKDKYQALCNIYGSITIGQAIIFCQ
 TRRNAKWLTVEMIQDGHQVSLLSGELTVEQRASIIQRFRDYGKEKVLITTNVCARGIDV
 KQVTIVVNFDPVKQGEEPDIYETYLHRIGRTGRFRGKKGLAFNMIEVDELPSLMKIQD
 HFNSSIKQLNAEDMDEIEKIDY

Applications
 Enzyme-linked Immunoabsorbent Assay
 Western Blot (Recombinant protein)
 Antibody Production
 Protein Array

Notes Best use within three months from the date of receipt of this protein.

Storage Store at -80 centigrade. Aliquot to avoid repeated freezing and thawing.

Storage Buffer 50 mM Tris-HCl, 10 mM reduced Glutathione, pH=8.0 in the elution buffer.

GENE INFORMATION

Gene Name [DDX25 DEAD \(Asp-Glu-Ala-Asp\) box helicase 25 \[Homo sapiens \]](#)

Official Symbol [DDX25](#)

Synonyms DDX25; DEAD (Asp-Glu-Ala-Asp) box helicase 25; DEAD (Asp Glu Ala Asp) box polypeptide 25 , DEAD/H (Asp Glu Ala Asp/His) box polypeptide 25; ATP-dependent RNA helicase DDX25; gonadotropin regulated testicular RNA helicase; GRTH; DEAD box protein 25; DEAD (Asp-Glu-Ala-Asp) box polypeptide 25; gonadotropin-regulated testicular RNA helicase; DEAD/H (Asp-Glu-Ala-Asp/His) box polypeptide 25;

Gene ID [29118](#)

 Tel: 1-631-559-9269 1-516-512-3133

 Email: info@creative-biomart.com  Fax: 1-631-938-8127

 45-1 Ramsey Road, Shirley, NY 11967, USA

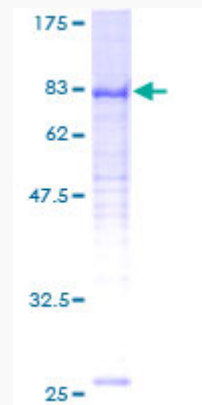
mRNA Refseq [NM_013264](#)

Protein Refseq [NP_037396](#)

MIM [607663](#)

UniProt ID [Q9UHL0](#)

Quality Control
Testing:



12.5% SDS-PAGE Stained with Coomassie Blue.

 Tel: 1-631-559-9269 1-516-512-3133

 Email: info@creative-biomart.com  Fax: 1-631-938-8127

 45-1 Ramsey Road, Shirley, NY 11967, USA