

## Recombinant Human DDX50 Protein, Myc/DDK-tagged, C13 and N15-labeled

Cat. No. DDX50-2310H Lot. No. (See product label)

### SPECIFICATION

<b>Product Overview</b>	DDX50 MS Standard C13 and N15-labeled recombinant protein (NP_076950) with a C-terminal MYC/DDK tag, was expressed in HEK293 cells.
<b>Species</b>	Human
<b>Source</b>	HEK293
<b>Description</b>	<p>DEAD box proteins, characterized by the conserved motif Asp-Glu-Ala-Asp (DEAD), are putative RNA helicases. They are implicated in a number of cellular processes involving alteration of RNA secondary structure such as translation initiation, nuclear and mitochondrial splicing, and ribosome and spliceosome assembly. Based on their distribution patterns, some members of this DEAD box protein family are believed to be involved in embryogenesis, spermatogenesis, and cellular growth and division.</p> <p>This gene encodes a DEAD box enzyme that may be involved in ribosomal RNA synthesis or processing. This gene and DDX21, also called RH-II/GuA, have similar genomic structures and are in tandem orientation on chromosome 10, suggesting that the two genes arose by gene duplication in evolution. This gene has pseudogenes on chromosomes 2, 3 and 4. Alternative splicing of this gene generates multiple transcript variants, but the full length nature of all the other variants but one has not been defined.</p>
<b>Molecular Mass</b>	82.6 kDa

 Tel: 1-631-559-9269 1-516-512-3133

 Email: [info@creative-biomart.com](mailto:info@creative-biomart.com)  Fax: 1-631-938-8127

 45-1 Ramsey Road, Shirley, NY 11967, USA

**AA Sequence**

MPGKLLWGDIMELEAPLEESQKKERQKSDRRKSRHHYDSDEKSETRENGVTDD  
 LDAPKAKKSKMKEKLNKDTEEGFNRLSDEFSKSHKSRRKDLPNGDIDEYEKKS  
 SSDLTSTHKSSDNKLEETLTREQKEGAFSNFPISEETIKLLKGRGVTYLFP  
 VYEGKDLIAQARTGTGKTFSAIPLIERLQRNQETIKKSRSPKVLVLAPTREL  
 ANQVAKDFKDITRKL SVACFYGGTSYQSQINHIRNGIDILVGTGRIKDH  
 LQSGRLDLSKLRHVVLDEVDQMLDLGFAEQVEDIIHESYKTDSE  
 DNPQTLLFSATCPQWVYKVAKKYMKSRYEQVDLVGKMTQKAATTVE  
 HLAIQCHWSQRPAVIGDVLQVYSGSEGRAIIFCETKKNVTEMAMNPHIK  
 QNAQCLHGDIASQREITLKGFRREGSKVVLVATNVAARGLDIPEDV  
 LVIQSSPPQDVESYIHRSGRTGRAGRTGICICFYQPRERGLRYVEQKAG  
 ITFKRVGVPSTMDLVKSKSMDAIRSLASVSYAAVDFFRPSAQRLEEKG  
 AVDALAAALAHISGAS SFEPRLITSDKGFVTMTLESLEEIQDVSCAW  
 KELNRKLSSNAVSQITRMCLLKGNMGVCFDVPTTESERLQAEWHDSD  
 WILSVPAKLPEIEEYYDGNTSSNSRQRSGWSSGRSGRSGRSGRSGR  
 QSRQGSRSRQDGRRRSGNRNRSRSGGHKRSFDTRTRPLEQKLISEED  
 LAANDILDYKDDDDKV

**Purity**

> 80% as determined by SDS-PAGE and Coomassie blue staining

**Stability**

Stable for 3 months from receipt of products under proper storage and handling conditions.

**Storage**

Store at -80 centigrade. Avoid repeated freeze-thaw cycles.

**Concentration**

50 µg/mL as determined by BCA

**Storage Buffer**

100 mM glycine, 25 mM Tris-HCl, pH 7.3.

## GENE INFORMATION

**Gene Name**

DDX50 DExD-box helicase 50 [ Homo sapiens (human) ]

**Official Symbol**

DDX50

 Tel: 1-631-559-9269 1-516-512-3133

 Email: [info@creative-biomart.com](mailto:info@creative-biomart.com)  Fax: 1-631-938-8127

 45-1 Ramsey Road, Shirley, NY 11967, USA

**Synonyms** DDX50; DEAD (Asp-Glu-Ala-Asp) box polypeptide 50; ATP-dependent RNA helicase DDX50; GU2; GUB; MGC3199; RH II/GuB; gu-beta; DEAD box protein 50; nucleolar protein GU2; RNA helicase II/Gu beta; RH-II/GuB;

**Gene ID** 79009

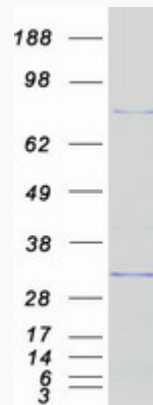
**mRNA Refseq** NM\_024045

**Protein Refseq** NP\_076950

**MIM** 610373

**UniProt ID** Q9BQ39

**SDS-PAGE**



 Tel: 1-631-559-9269 1-516-512-3133

 Email: [info@creative-biomart.com](mailto:info@creative-biomart.com)  Fax: 1-631-938-8127

 45-1 Ramsey Road, Shirley, NY 11967, USA