

Recombinant Human DDX50 Protein, GST-tagged

Cat. No. DDX50-2498H Lot. No. (See product label)

SPECIFICATION

Product Overview	Human DDX50 full-length ORF (NP_076950.1, 1 a.a. - 737 a.a.) recombinant protein with GST-tag at N-terminal.
Species	Human
Source	Wheat Germ
Description	<p>DEAD box proteins, characterized by the conserved motif Asp-Glu-Ala-Asp (DEAD), are putative RNA helicases. They are implicated in a number of cellular processes involving alteration of RNA secondary structure such as translation initiation, nuclear and mitochondrial splicing, and ribosome and spliceosome assembly. Based on their distribution patterns, some members of this DEAD box protein family are believed to be involved in embryogenesis, spermatogenesis, and cellular growth and division.</p> <p>This gene encodes a DEAD box enzyme that may be involved in ribosomal RNA synthesis or processing. This gene and DDX21, also called RH-II/GuA, have similar genomic structures and are in tandem orientation on chromosome 10, suggesting that the two genes arose by gene duplication in evolution. This gene has pseudogenes on chromosomes 2, 3 and 4. Alternative splicing of this gene generates multiple transcript variants, but the full length nature of all the other variants but one has not been defined. [provided by RefSeq, Jul 2008]</p>
Molecular Mass	109 kDa
AA Sequence	MPGKLLWGDIMELEAPLEESQKKERQKSDRRKSRHHYDSDEKSETRENGVTDD

 Tel: 1-631-559-9269 1-516-512-3133

 Email: info@creative-biomart.com  Fax: 1-631-938-8127

 45-1 Ramsey Road, Shirley, NY 11967, USA

LDAPKAKKSKMKEKLNKDTEEGFNRLSDEFSKSHKSRRKDLPNGDIDEYEKKSQRV
 SSLDTSTHKSSDNKLEETLTREQKEGAFSNFPISEETIKLLKGRGVTYLFPQVKTFGP
 VYEGKDLIAQARTGTGKTFSAIPLIERLQRNQETIKKSRSPKVLVLAPTRELANQVAK
 DFKDITRKLVSACFYGGTSYQSQINHIRNGIDILVGTGRIKDHLSGRLDLSKLRHVV
 LDEVDQMLDLGFAEQVEDIIHESYKTDSEDNPQTLLFSATCPQWVYKVAKKYMKSR
 YEQVDLVGKMTQKAATTVEHLAIQCHWSQRPAVIGDVLQVYSGSEGRAIIFCETKKN
 VTEMAMNPHIKQNAQCLHGDIAQSQREITLKGFRREGSFKVLVATNVAARGLDIPEVD
 LVIQSSPPQDVESYIHRSGRTGRAGRTGICICFYQPRERGLRYVEQKAGITFKRVG
 VPSTMDLVKSKSMDAIRSLASVSAAVDFFRPSAQRLLIEEKGAVDALAAALAHISGAS
 SFEPRLITSDKGFVTMTLESLEEIQDVSCAWKELNRKLSSNAVSQITRMCLLKGNM
 GVCFDVPTTESERLQAEWHSDWILSVPAKLPEIEEYDGNNTSSNSRQRSGWSSG
 RSGRSGRSGGRSGGRSGRQSRQGSRSRSGRQDGRRRSGNRNRSRSGGHKRSFD

Applications

Enzyme-linked Immunoabsorbent Assay
 Western Blot (Recombinant protein)
 Antibody Production
 Protein Array

Notes

Best use within three months from the date of receipt of this protein.

Storage

Store at -80 centigrade. Aliquot to avoid repeated freezing and thawing.

Storage Buffer

50 mM Tris-HCl, 10 mM reduced Glutathione, pH=8.0 in the elution buffer.

GENE INFORMATION

Gene Name

DDX50 DEAD (Asp-Glu-Ala-Asp) box polypeptide 50 [Homo sapiens]

Official Symbol

DDX50

Synonyms

DDX50; DEAD (Asp-Glu-Ala-Asp) box polypeptide 50; ATP-dependent RNA helicase

 Tel: 1-631-559-9269 1-516-512-3133

 Email: info@creative-biomart.com  Fax: 1-631-938-8127

 45-1 Ramsey Road, Shirley, NY 11967, USA

DDX50; GU2; GUB; MGC3199; RH II/GuB; gu-beta; DEAD box protein 50; nucleolar protein GU2; RNA helicase II/Gu beta; RH-II/GuB;

Gene ID 79009

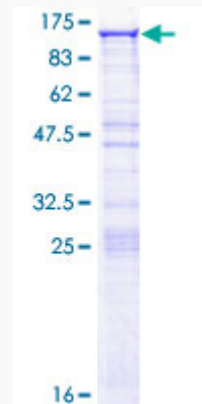
mRNA Refseq NM_024045

Protein Refseq NP_076950

MIM 610373

UniProt ID Q9BQ39

**Quality Control
Testing:**



12.5% SDS-PAGE Stained with Coomassie Blue.

 Tel: 1-631-559-9269 1-516-512-3133

 Email: info@creative-biomart.com  Fax: 1-631-938-8127

 45-1 Ramsey Road, Shirley, NY 11967, USA