

Recombinant Mouse DEFA5 Protein (59-93 aa), GST-tagged

Cat. No. DEFA5-1955M Lot. No. (See product label)

SPECIFICATION

| | |
|-------------------------|--|
| Product Overview | Recombinant Mouse DEFA5 Protein (59-93 aa) is produced by E. coli expression system. This protein is fused with a GST tag at the N-terminal. Protein Description: Full Length of Mature Protein. |
| Species | Mouse |
| Source | E.coli |
| ProteinLength | 59-93 aa |
| Description | Probably contributes to the antimicrobial barrier function of the small bowel mucosa. |
| Form | Tris-based buffer,50% glycerol |
| Molecular Mass | 31.2 kDa |
| AA Sequence | SKKLICYCRIRGCKRRERVFGTCRNLFVFCSS |
| Purity | > 90% as determined by SDS-PAGE. |
| Notes | Repeated freezing and thawing is not recommended. Store working aliquots at 4 centigrade for up to one week. |
| Storage | The shelf life is related to many factors, storage state, buffer ingredients, storage temperature and the stability of the protein itself. Generally, the shelf life of liquid form |

 Tel: 1-631-559-9269 1-516-512-3133

 Email: info@creative-biomart.com  Fax: 1-631-938-8127

 45-1 Ramsey Road, Shirley, NY 11967, USA



is 6 months at -20 centigrade/-80 centigrade. The shelf life of lyophilized form is 12 months at -20 centigrade/-80 centigrade.

Concentration A hardcopy of COA with reconstitution instruction is sent along with the products.

GENE INFORMATION

Gene Name Defa5 defensin, alpha, 5 [Mus musculus]

Official Symbol DEFA5

Synonyms DEFA5; defensin, alpha, 5; alpha-defensin 5; Defa29; Defcr5; Defcr29;

Gene ID 13239

mRNA Refseq NM_007851

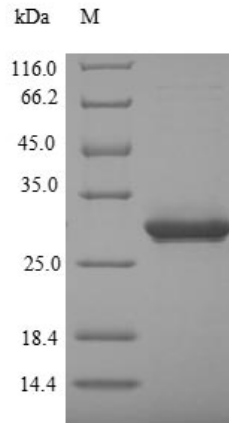
Protein Refseq NP_031877

UniProt ID P28312

 Tel: 1-631-559-9269 1-516-512-3133

 Email: info@creative-biomart.com  Fax: 1-631-938-8127

 45-1 Ramsey Road, Shirley, NY 11967, USA



(Tris-Glycine gel) Discontinuous SDS-PAGE (reduced) with 5% enrichment gel and 15% separation gel.

 Tel: 1-631-559-9269 1-516-512-3133

 Email: info@creative-biomart.com  Fax: 1-631-938-8127

 45-1 Ramsey Road, Shirley, NY 11967, USA