

Recombinant Full Length Human DEK Protein, C-Flag-tagged

Cat. No. DEK-1090HFL Lot. No. (See product label)

SPECIFICATION

Product Overview	Recombinant Full Length Human DEK Protein, fused to Flag-tag at C-terminus, was expressed in Mammalian cells.
Species	Human
Source	Mammalian Cells
Description	This gene encodes a protein with one SAP domain. This protein binds to cruciform and superhelical DNA and induces positive supercoils into closed circular DNA, and is also involved in splice site selection during mRNA processing. Chromosomal aberrations involving this region, increased expression of this gene, and the presence of antibodies against this protein are all associated with various diseases. Two transcript variants encoding different isoforms have been found for this gene.
Form	25 mM Tris HCl, pH 7.3, 100 mM glycine, 10% glycerol.
Molecular Mass	42.5 kDa
AA Sequence	MSASAPAAEGEGTPTQPASEKEPEMPGPREESEEEEEDEDEEEEEEEKEKSLIVEG KREKKKVERLTMQV SSLQREPFTIAQGKGQKLCEIERIHFFLSKKKTDELRLNLHKLLY NRPGTVSSLKKNVGGFSGFPFEKGSV QYKKKEEMLKKFRNAMLKSICEVLDLERSG VNSELVKRILNFLMHPKPSGKPLPKSKKTCSKGSKKERNS SGMARKAKRTKCPEILS DESSSDEDEKKNKEESSDDEDKESEEEPPKKTAKREKPKQKATSKSKSVKSA NV KKADSSTTKKNQNSSKKESESEDSSDDEPLIKLKKPPTDEELKETIKLLASANLEE VTMKQICKKV

 Tel: 1-631-559-9269 1-516-512-3133

 Email: info@creative-biomart.com  Fax: 1-631-938-8127

 45-1 Ramsey Road, Shirley, NY 11967, USA

YENYPTYDLTERKDFIKTTVKELISTRTRPLEQKLISEEDLAANDILDYKDDDDKV

Purity > 80% as determined by SDS-PAGE and Coomassie blue staining.

Stability Stable for 12 months from the date of receipt of the product under proper storage and handling conditions. Avoid repeated freeze-thaw cycles.

Storage Store at -80 centigrade.

Concentration >50 ug/mL as determined by microplate BCA method.

Preparation Recombinant protein was captured through anti-DDK affinity column followed by conventional chromatography steps.

Protein Families Druggable Genome, Transcription Factors

Full Length Full L.

GENE INFORMATION

Gene Name [DEK DEK proto-oncogene \[Homo sapiens \(human\) \]](#)

Official Symbol [DEK](#)

Synonyms [D6S231E](#)

Gene ID [7913](#)

mRNA Refseq [NM_003472.4](#)

Protein Refseq [NP_003463.1](#)

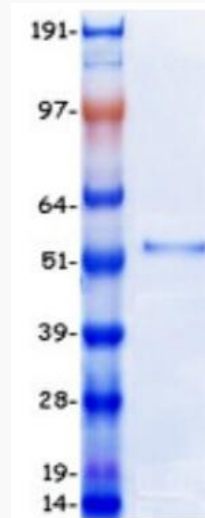
 Tel: 1-631-559-9269 1-516-512-3133

 Email: info@creative-biomart.com  Fax: 1-631-938-8127

 45-1 Ramsey Road, Shirley, NY 11967, USA

MIM 125264

UniProt ID P35659



Coomassie blue staining of purified DEK protein.

 Tel: 1-631-559-9269 1-516-512-3133

 Email: info@creative-biomart.com  Fax: 1-631-938-8127

 45-1 Ramsey Road, Shirley, NY 11967, USA