

## Recombinant Human DEPTOR Protein, GST-tagged

Cat. No. DEPTOR-5182H Lot. No. (See product label)

### SPECIFICATION

<b>Product Overview</b>	Human DEPDC6 full-length ORF ( AAH12040, 1 a.a. - 409 a.a.) recombinant protein with GST-tag at N-terminal.
<b>Species</b>	Human
<b>Source</b>	Wheat Germ
<b>Description</b>	DEPTOR (DEP Domain Containing MTOR Interacting Protein) is a Protein Coding gene. Among its related pathways are MAPK Signaling: Mitogen Stimulation Pathway and PI3K / Akt Signaling.
<b>Molecular Mass</b>	70.73 kDa
<b>AA Sequence</b>	MEEGGSTGSAGSDSSTSGSGGAQQRELERMAEVLVTGEQLRLRLHEEKVIKDRRH HLKTYPNCFVAKELIDWLIHKEASDRETAIKLMQKLADRGIIHHVCDEHKEFKDVKLF YRFRKDDGTFPLDNEVKAFMRGQRLYEKLMSPENTLLQPREEEGVKYERTFMASEF LDWLVQEGEATTRKEAEQLCHRLMEHGIIQHVSSKHPFVDSNLLYQFRMNFRRRRR LMELLNEKSPSSQETHDSPFCLRKQSHDNRKSTSFMSVSPSKEIKTVSAVRRSSMS SCGSSGYFSSSPTLSSSPPVLCNPKSVLKRPTSEELLTPGAPYARKTFTIVGDAVG WGFVVRGSKPCHIQAVDPSGPAAAAGMKVCQFVSVNGLNLVHVDYRTVNNLILTG PRTIVMEVMEELEC
<b>Applications</b>	Enzyme-linked Immunoabsorbent Assay Western Blot (Recombinant protein) Antibody Production

 Tel: 1-631-559-9269 1-516-512-3133

 Email: [info@creative-biomart.com](mailto:info@creative-biomart.com)  Fax: 1-631-938-8127

 45-1 Ramsey Road, Shirley, NY 11967, USA

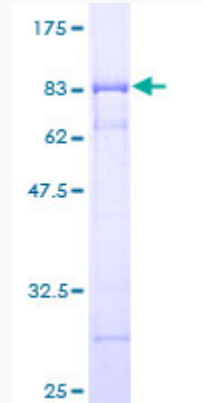
	Protein Array
<b>Notes</b>	Best use within three months from the date of receipt of this protein.
<b>Storage</b>	Store at -80 centigrade. Aliquot to avoid repeated freezing and thawing.
<b>Storage Buffer</b>	50 mM Tris-HCl, 10 mM reduced Glutathione, pH=8.0 in the elution buffer.
<b>GENE INFORMATION</b>	
<b>Gene Name</b>	DEPTOR DEP domain containing MTOR interacting protein [ Homo sapiens (human) ]
<b>Official Symbol</b>	DEPTOR
<b>Synonyms</b>	DEPDC6; DEPTOR; DEP domain containing MTOR interacting protein; DEP.6; DEP domain-containing mTOR-interacting protein; DEP domain containing 6; DEP domain-containing protein 6
<b>Gene ID</b>	64798
<b>mRNA Refseq</b>	NM_001283012
<b>Protein Refseq</b>	NP_001269941
<b>MIM</b>	612974
<b>UniProt ID</b>	Q8TB45

 Tel: 1-631-559-9269 1-516-512-3133

 Email: [info@creative-biomart.com](mailto:info@creative-biomart.com)  Fax: 1-631-938-8127

 45-1 Ramsey Road, Shirley, NY 11967, USA

**Quality Control  
Testing**



12.5% SDS-PAGE Stained with Coomassie Blue.

 Tel: 1-631-559-9269 1-516-512-3133

 Email: [info@creative-biomart.com](mailto:info@creative-biomart.com)  Fax: 1-631-938-8127

 45-1 Ramsey Road, Shirley, NY 11967, USA