

Recombinant Human DES Protein (Val260-Leu470), N-His tagged

Cat. No. DES-1950H Lot. No. (See product label)

SPECIFICATION

Product Overview	Recombinant human DES (Val260-Leu470) fused with N-terminal His tag was expressed in E. coli.
Species	Human
Source	E.coli
ProteinLength	Val260-Leu470
Form	Lyophilized powder/frozen liquid
Molecular Mass	23.21 kDa
Purity	>90% as determined by SDS-PAGE
Notes	For research use only.
Storage	Use a manual defrost freezer and avoid repeated freeze thaw cycles. Store at 2 to 8 centigrade for one week. Store at -20 to -80 centigrade for twelve months from the date of receipt.
Storage Buffer	Supplied as solution form in PBS or lyophilized from PBS.
Reconstitution	Reconstitute in sterile water for a stock solution.

 Tel: 1-631-559-9269 1-516-512-3133

 Email: info@creative-biomart.com  Fax: 1-631-938-8127

 45-1 Ramsey Road, Shirley, NY 11967, USA

Shipping They are shipped out with dry ice/blue ice unless customers require otherwise.

GENE INFORMATION

Gene Name DES desmin [Homo sapiens (human)]

Official Symbol DES

Synonyms DES; desmin; CMD1I; CSM1; CSM2; intermediate filament protein; FLJ12025; FLJ39719; FLJ41013; FLJ41793;

Gene ID 1674

mRNA Refseq NM_001927

Protein Refseq NP_001918

MIM 125660

UniProt ID P17661

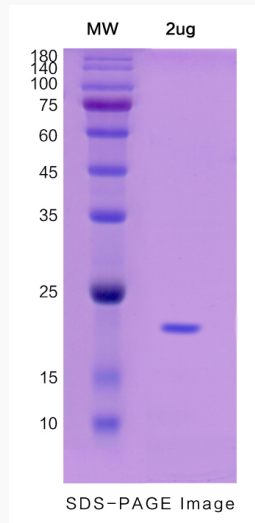
 Tel: 1-631-559-9269 1-516-512-3133

 Email: info@creative-biomart.com  Fax: 1-631-938-8127

 45-1 Ramsey Road, Shirley, NY 11967, USA



SDS-PAGE



Tel: 1-631-559-9269 1-516-512-3133

Email: info@creative-biomart.com Fax: 1-631-938-8127

45-1 Ramsey Road, Shirley, NY 11967, USA