

Recombinant Human DES protein, EGFP-tagged

Cat. No. DES-323H Lot. No. (See product label)

SPECIFICATION

Product Overview	Recombinant Human DES protein(P17661)(2-470aa), fused with C-terminal EGFP tag, was expressed in E.coli.
Species	Human
Source	E.coli
ProteinLength	2-470aa
Form	If the delivery form is liquid, the default storage buffer is Tris/PBS-based buffer, 5%-50% glycerol. If the delivery form is lyophilized powder, the buffer before lyophilization is Tris/PBS-based buffer, 6% Trehalose, pH 8.0.
Molecular Mass	80.5 kDa
Purity	Greater than 85% as determined by SDS-PAGE.
Storage	Store at -20°C/-80°C upon receipt, aliquoting is necessary for mutiple use. Avoid repeated freeze-thaw cycles.
Reconstitution	We recommend that this vial be briefly centrifuged prior to opening to bring the contents to the bottom. Please reconstitute protein in deionized sterile water to a concentration of 0.1-1.0 mg/mL. We recommend to add 5-50% of glycerol (final concentration) and aliquot for long-term storage at -20°C/-80°C.

 Tel: 1-631-559-9269 1-516-512-3133

 Email: info@creative-biomart.com  Fax: 1-631-938-8127

 45-1 Ramsey Road, Shirley, NY 11967, USA

AA Sequence

SQAYSSSQRVSSYRRTFGGAPGFPLGSPVFPFRAGFGSKGSSSSVTSRVYQV
 SRTSGGAGGLGSLRASRLGTTTRTPSSYGAGELDFSLADAVNQEFLLTRTNEKVEL
 QELNDRFANYIEKVRVFLEQQNAALAAEVNRLKGREPTRVAELYEEELRELRRQVEVL
 TNQRARVDVERDNLDDLQRLKAKLQEEIQLKEEAENNLAAFRADVDAATLARIDLE
 RRIESLNEEIAFLKKVHEEEIRELQAQLQEQQVQVEMDMSKPDLTAAALRDIRAQYETI
 AAKNISEAAEWYKSKVSDLTQAANKNNDALRQAKQEMMEYRHQIQSYTCEIDALKG
 TNDSLMRQMRELEDRFASEASGYQDNARLEEEIRHLKDEMARHLREYQDLLNVKM
 ALDVEIATYRKLLERGEESRINLPQTYALSALNFRETSPEQRGSEVHTKKTVMIKTIETRD
 GEVVSEATQQQHEVL

GENE INFORMATION

Gene Name [DES desmin \[Homo sapiens \]](#)

Official Symbol [DES](#)

Synonyms [DES](#); [desmin](#); [CMD1I](#); [CSM1](#); [CSM2](#); [intermediate filament protein](#); [FLJ12025](#); [FLJ39719](#); [FLJ41013](#); [FLJ41793](#);

Gene ID [1674](#)

mRNA Refseq [NM_001927](#)

Protein Refseq [NP_001918](#)

MIM [125660](#)

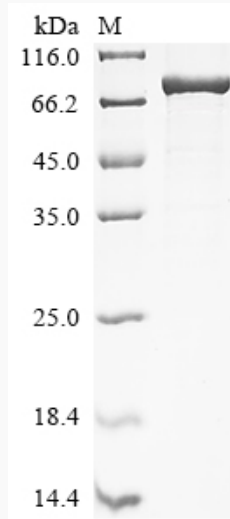
UniProt ID [P17661](#)

 Tel: 1-631-559-9269 1-516-512-3133

 Email: info@creative-biomart.com  Fax: 1-631-938-8127

 45-1 Ramsey Road, Shirley, NY 11967, USA

SDS-PAGE



 Tel: 1-631-559-9269 1-516-512-3133

 Email: info@creative-biomart.com  Fax: 1-631-938-8127

 45-1 Ramsey Road, Shirley, NY 11967, USA