

## Recombinant Human DES protein, His-tagged

Cat. No. DES-324H Lot. No. (See product label)

### SPECIFICATION

<b>Product Overview</b>	Recombinant Human DES protein(P17661)(2-470aa), fused with N-terminal His tag, was expressed in E.coli.
<b>Species</b>	Human
<b>Source</b>	E.coli
<b>ProteinLength</b>	2-470aa
<b>Form</b>	If the delivery form is liquid, the default storage buffer is Tris/PBS-based buffer, 5%-50% glycerol. If the delivery form is lyophilized powder, the buffer before lyophilization is Tris/PBS-based buffer, 6% Trehalose, pH 8.0.
<b>Molecular Mass</b>	59.4 kDa
<b>Purity</b>	Greater than 85% as determined by SDS-PAGE.
<b>Storage</b>	Store at -20°C/-80°C upon receipt, aliquoting is necessary for mutiple use. Avoid repeated freeze-thaw cycles.
<b>Reconstitution</b>	We recommend that this vial be briefly centrifuged prior to opening to bring the contents to the bottom. Please reconstitute protein in deionized sterile water to a concentration of 0.1-1.0 mg/mL. We recommend to add 5-50% of glycerol (final concentration) and aliquot for long-term storage at -20°C/-80°C.

 Tel: 1-631-559-9269 1-516-512-3133

 Email: [info@creative-biomart.com](mailto:info@creative-biomart.com)  Fax: 1-631-938-8127

 45-1 Ramsey Road, Shirley, NY 11967, USA

**AA Sequence**

SQAYSSSQRVSSYRRTFGGAPGFPLGSPVFPFRAGFGSKGSSSSSVTSRVYQV  
 SRTSGGAGGLGSLRASRLGTTTRTPSSYGAGELDFSLADAVNQEFLLTTRTNEKVEL  
 QELNDRFANYIEKVRVFLEQQNAALAAEVNRLKGREPTRVAELYEEELRELRRQVEVL  
 TNQRARVDVERDNLDDLQRLKAKLQEEIQLKEEAENNLAAFRADVDAATLARIDLE  
 RRIESLNEEIAFLKKVHEEEIRELQAQLQEQQVQVEMDMSKPDLTAAALRDIRAQYETI  
 AAKNISEAEWYKSKVSDLTQAANKNNDALRQAKQEMMEYRHQIQSYTCEIDALKG  
 TNDSLMRQMRELEDRFASEASGYQDNARLEEEIRHLKDEMARHLREYQDLLNVKM  
 ALDVEIATYRKLLERGEESRINLPIQTYALSALNFRETSPEQRGSEVHTKKTVMIKTIETRD  
 GEVVSEATQQQHEVL

## GENE INFORMATION

**Gene Name** [DES desmin \[ Homo sapiens \]](#)

**Official Symbol** [DES](#)

**Synonyms** [DES](#); [desmin](#); [CMD1I](#); [CSM1](#); [CSM2](#); [intermediate filament protein](#); [FLJ12025](#); [FLJ39719](#); [FLJ41013](#); [FLJ41793](#);

**Gene ID** [1674](#)

**mRNA Refseq** [NM\\_001927](#)

**Protein Refseq** [NP\\_001918](#)

**MIM** [125660](#)

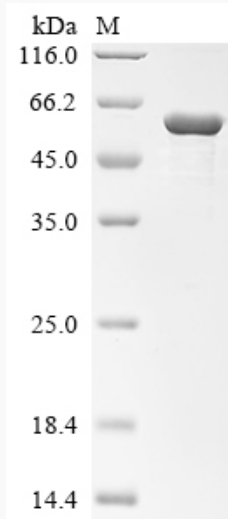
**UniProt ID** [P17661](#)

 Tel: 1-631-559-9269 1-516-512-3133

 Email: [info@creative-biomart.com](mailto:info@creative-biomart.com)  Fax: 1-631-938-8127

 45-1 Ramsey Road, Shirley, NY 11967, USA

**SDS-PAGE**



 Tel: 1-631-559-9269 1-516-512-3133

 Email: [info@creative-biomart.com](mailto:info@creative-biomart.com)  Fax: 1-631-938-8127

 45-1 Ramsey Road, Shirley, NY 11967, USA