

Recombinant Human DES Protein, His-tagged

Cat. No. DES-534H Lot. No. (See product label)

SPECIFICATION

Product Overview	Recombinant Human DES(Asp117~Gln348) fused with His tag at N-terminal was expressed in E. coli.
Species	Human
Source	E.coli
ProteinLength	Asp117~Gln348
Description	This gene encodes a muscle-specific class III intermediate filament. Homopolymers of this protein form a stable intracytoplasmic filamentous network connecting myofibrils to each other and to the plasma membrane. Mutations in this gene are associated with desmin-related myopathy, a familial cardiac and skeletal myopathy (CSM), and with distal myopathies.
Form	PBS, pH7.4, containing 0.01% SKL, 1mM DTT, 5% Trehalose and Proclin300.
Molecular Mass	31.0kDa
Identity	Reconstitute in PBS or others
Endotoxin	<1.0EU per 1g (determined by the LAL method)
Purity	> 95%

 Tel: 1-631-559-9269 1-516-512-3133

 Email: info@creative-biomart.com  Fax: 1-631-938-8127

 45-1 Ramsey Road, Shirley, NY 11967, USA

Applications	Positive Control; Immunogen; SDS-PAGE; WB. If bio-activity of the protein is needed, please check active protein
Stability	The thermal stability is described by the loss rate. The loss rate was determined by accelerated thermal degradation test, that is, incubate the protein at 37 centigrade for 48h, and no obvious degradation and precipitation were observed. The loss rate is less than 5% within the expiration date under appropriate storage condition.
Storage	Avoid repeated freeze/thaw cycles. Store at 2-8 centigrade for one month. Aliquot and store at -80 centigrade for 12 months.
Reconstitution	Reconstitute in PBS or others

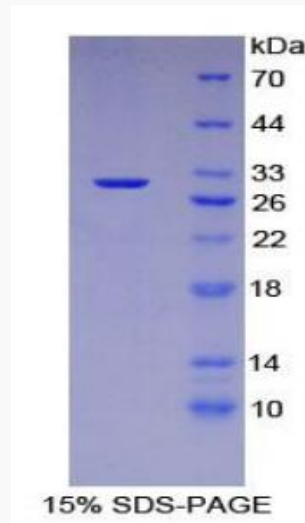
GENE INFORMATION

Gene Name	DES desmin [Homo sapiens]
Official Symbol	DES
Synonyms	DES; desmin; CMD1I; CSM1; CSM2; intermediate filament protein; FLJ12025; FLJ39719; FLJ41013; FLJ41793;
Gene ID	1674
mRNA Refseq	NM_001927
Protein Refseq	NP_001918
MIM	125660
UniProt ID	P17661

 Tel: 1-631-559-9269 1-516-512-3133

 Email: info@creative-biomart.com  Fax: 1-631-938-8127

 45-1 Ramsey Road, Shirley, NY 11967, USA



Tel: 1-631-559-9269 1-516-512-3133

Email: info@creative-biomart.com Fax: 1-631-938-8127

45-1 Ramsey Road, Shirley, NY 11967, USA