

## Recombinant Human DFFA Protein (Met1-Thr331), N-His tagged

Cat. No. DFFA-1956H    Lot. No. (See product label)

### SPECIFICATION

<b>Product Overview</b>	Recombinant human DFFA (Met1-Thr331) fused with N-terminal His tag was expressed in E. coli.
<b>Species</b>	Human
<b>Source</b>	E.coli
<b>ProteinLength</b>	Met1-Thr331
<b>Form</b>	Lyophilized powder/frozen liquid
<b>Molecular Mass</b>	36.41 kDa
<b>Purity</b>	>90% as determined by SDS-PAGE
<b>Notes</b>	For research use only.
<b>Storage</b>	Use a manual defrost freezer and avoid repeated freeze thaw cycles. Store at 2 to 8 centigrade for one week. Store at -20 to -80 centigrade for twelve months from the date of receipt.
<b>Storage Buffer</b>	Supplied as solution form in PBS or lyophilized from PBS.
<b>Reconstitution</b>	Reconstitute in sterile water for a stock solution.

 Tel: 1-631-559-9269    1-516-512-3133

 Email: [info@creative-biomart.com](mailto:info@creative-biomart.com)     Fax: 1-631-938-8127

 45-1 Ramsey Road, Shirley, NY 11967, USA

**Shipping** They are shipped out with dry ice/blue ice unless customers require otherwise.

## GENE INFORMATION

**Gene Name** DFFA DNA fragmentation factor, 45kDa, alpha polypeptide [ Homo sapiens (human) ]

**Official Symbol** DFFA

**Synonyms** DFFA; DNA fragmentation factor, 45kDa, alpha polypeptide; DNA fragmentation factor, 45 kD, alpha polypeptide; DNA fragmentation factor subunit alpha; DFF 45; DFF1; DFF45; DNA fragmentation factor; 45 kD; alpha subunit; ICAD; inhibitor of CAD; DNA fragmentation factor 45 kDa subunit; DFF-45;

**Gene ID** 1676

**mRNA Refseq** NM\_004401

**Protein Refseq** NP\_004392

**MIM** 601882

**UniProt ID** O00273

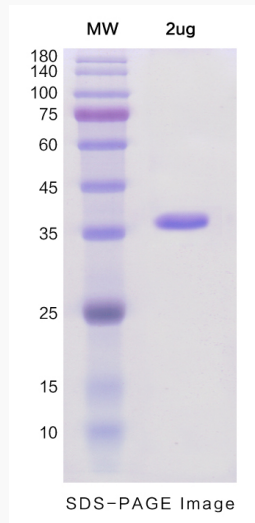
 Tel: 1-631-559-9269 1-516-512-3133

 Email: [info@creative-biomart.com](mailto:info@creative-biomart.com)  Fax: 1-631-938-8127

 45-1 Ramsey Road, Shirley, NY 11967, USA



SDS-PAGE



Tel: 1-631-559-9269 1-516-512-3133

Email: [info@creative-biomart.com](mailto:info@creative-biomart.com) Fax: 1-631-938-8127

45-1 Ramsey Road, Shirley, NY 11967, USA