

## Active Recombinant Human DGKE protein, His-tagged

Cat. No. DGKE-597H Lot. No. (See product label)

### SPECIFICATION

<b>Product Overview</b>	Active Recombinant Human DGKE protein(P52429)(243-502 aa), fused with N-terminal His tag, was expressed in E.coli.
<b>Species</b>	Human
<b>Source</b>	E.coli
<b>ProteinLength</b>	243-502 aa
<b>Form</b>	20mM Tris, 150mM NaCl, pH8.0, containing 1mM EDTA, 1mM DTT, 0.01% SKL, 5% Trehalose and Proclin300.
<b>Bio-activity</b>	DGKe (Diacylglycerol kinase epsilon) is an enzyme that mainly involved in the regeneration of phosphatidylinositol (PI) from diacylglycerol in the PI-cycle during cell signal transduction. PDHA1 (Pyruvate dehydrogenase E1 component subunit alpha) has been proven to be an interactor of DGKe through Affinity Capture-MS. Thus a binding ELISA assay was conducted to detect the interaction of recombinant human DGKe and recombinant human PDHA. Briefly, DGKe were diluted serially in PBS, with 0.01%BSA (pH 7.4). Duplicate samples of 100uL DGKe were then transferred to PDHA-coated microtiter wells and incubated for 2h at 37°C. Wells were washed with PBST and incubated for 1h with anti-DGKE pAb, then aspirated and washed 3 times. After incubation with HRP labelled secondary antibody, wells were aspirated and washed 3 times. With the addition of substrate solution, wells were incubated 15-25 minutes at 37°C. Finally, add 50µ stop solution to the wells and read at 450nm

 Tel: 1-631-559-9269 1-516-512-3133

 Email: [info@creative-biomart.com](mailto:info@creative-biomart.com)  Fax: 1-631-938-8127

 45-1 Ramsey Road, Shirley, NY 11967, USA

immediately. The binding activity of DGKe and PDHA was shown, and this effect was in a dose dependent manner.

**Molecular Mass** 32.5kDa

**Purity** > 95%

**Storage** Avoid repeated freeze/thaw cycles. Store at 2-8°C for one month. Store at -20°C for 12 months. Aliquot and store at -80°C for 12 months.

**Reconstitution** Reconstitute in 20mM Tris, 150mM NaCl (pH8.0) to a concentration of 0.1-1.0 mg/mL. Do not vortex.

## GENE INFORMATION

**Gene Name** [DGKE diacylglycerol kinase, epsilon 64kDa \[ Homo sapiens \]](#)

**Official Symbol** [DGKE](#)

**Synonyms** DGKE; diacylglycerol kinase, epsilon 64kDa; diacylglycerol kinase, epsilon (64kD); diacylglycerol kinase epsilon; DAGK6; DGK; DGK-epsilon; DAG kinase epsilon; diglyceride kinase epsilon; DAGK5;

**Gene ID** [8526](#)

**mRNA Refseq** [NM\\_003647](#)

**Protein Refseq** [NP\\_003638](#)

**MIM** [601440](#)

 Tel: 1-631-559-9269 1-516-512-3133

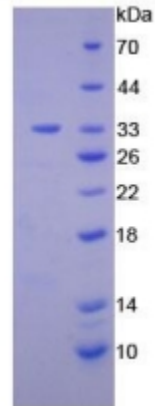
 Email: [info@creative-biomart.com](mailto:info@creative-biomart.com)  Fax: 1-631-938-8127

 45-1 Ramsey Road, Shirley, NY 11967, USA

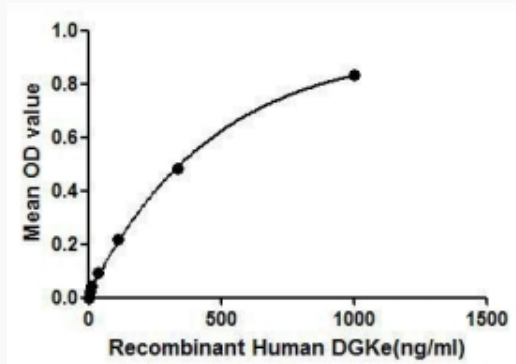
UniProt ID

P52429

SDS-PAGE



Activity



 Tel: 1-631-559-9269 1-516-512-3133

 Email: [info@creative-biomart.com](mailto:info@creative-biomart.com)  Fax: 1-631-938-8127

 45-1 Ramsey Road, Shirley, NY 11967, USA