

Recombinant Human DHTKD1 Protein, GST-tagged

Cat. No. DHTKD1-2605H Lot. No. (See product label)

SPECIFICATION

Product Overview	Human DHTKD1 full-length ORF (NP_061176.3, 1 a.a. - 919 a.a.) recombinant protein with GST-tag at N-terminal.
Species	Human
Source	Wheat Germ
Description	This gene encodes a component of a mitochondrial 2-oxoglutarate-dehydrogenase-co mplex-like protein involved in the degradation pathways of several amino acids, includ ing lysine. Mutations in this gene are associated with 2-aminoadipic 2-oxoadipic acidu ria and Charcot-Marie-Tooth Disease Type 2Q. [provided by RefSeq, May 2013]
Molecular Mass	129.4 kDa
AA Sequence	MASATAAAAARRGLGRALPLLWRGYQTERGVYGYRPRKPESREPQGALERPPVDH GLARLVTVYCEHGHKAAKINPLFTGQALLENVPEIQALVQTLQGPFHTAGLLNMGKE EASLEEVLVYLNQIYCGQISIETSQSQDEKDWFAKRFEELQKETFTTEERKHLSKL MLESQEFDHFLATKFSTVKRYGGEGAESMMGFFHELLKMSAYSGITDVIIGMPHRG RLNLLTGLLQFPPELMFRKMRGLSEFPENFSATGDVLSHLTSSVDLYFGAHHPLHVT MLPNPSHLEAVNPVAVGKTRGRQQSRQDGDYSPDNSAQPGDRVICLQVHGDAFC GGGIVPETFTLSNLPHFRIGGSVHLIVNNQLGYTTTPAERGRSSLYCSDIGKLVGCAIHH VNGDSPEEVVRATRLAFEYQRQFRKDVIIDLLCYRQWGHNELDEPFYTNPIMYKIIRA RKSIPDTYAEHLIAGGLMTQEEVSEIKSSYYAKLNDHLNMAHYRPPALNLQAHWQG LAQPEAQITTWSTGVPLDLLRFVGMKSVEVPRELQMHSLLKTHVQSRMEKMMMDGI

 Tel: 1-631-559-9269 1-516-512-3133

 Email: info@creative-biomart.com  Fax: 1-631-938-8127

 45-1 Ramsey Road, Shirley, NY 11967, USA

KLDWATAEALALGSLLAQGFNVRLSGQDVGRGTFSSQRHAIVVCQETDDTYIPLNHM
 DPNQKGFLEVSNSPLSEEAVLGFYEGMSIESPKLLPLWEAQFGDFNQAQIIFDTFIS
 GGEAKWLLQSGIVILLPHGYDGAGPDHSSCRIERFLQMCDSAEEGVGDGDTVNMFFV
 HPTTPAQYFHLLRRQMVRNFRKPLIVASPKMLLRLPAAVSTLQEMAPGTTFNPVIGD
 SSVDPKKVKTLVFCSGKHFYSLVKQRESLGAKKHDFAIIRVEELCPFPLDSLQQEMS
 KYKHVKDHIWSQEEPQNMGPWSFVSPRFEKQLACKLRLVGRPPLPVPVAVGIGTVHL
 HQHEDILAKTFA

Applications	Enzyme-linked Immunoabsorbent Assay Western Blot (Recombinant protein) Antibody Production Protein Array
Notes	Best use within three months from the date of receipt of this protein.
Storage	Store at -80 centigrade. Aliquot to avoid repeated freezing and thawing.
Storage Buffer	50 mM Tris-HCl, 10 mM reduced Glutathione, pH=8.0 in the elution buffer.

GENE INFORMATION

Gene Name	DHTKD1 dehydrogenase E1 and transketolase domain containing 1 [Homo sapiens]
Official Symbol	DHTKD1
Synonyms	DHTKD1; dehydrogenase E1 and transketolase domain containing 1; probable 2-oxoglutarate dehydrogenase E1 component DHKTD1, mitochondrial; dehydrogenase E1 and transketolase domain-containing protein 1; MGC3090; KIAA1630; DKFZp762M115;
Gene ID	55526

 Tel: 1-631-559-9269 1-516-512-3133

 Email: info@creative-biomart.com  Fax: 1-631-938-8127

 45-1 Ramsey Road, Shirley, NY 11967, USA

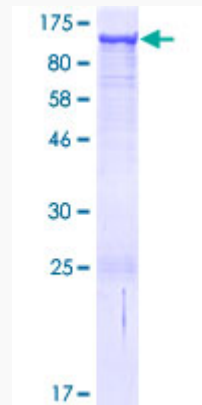
mRNA Refseq [NM_018706](#)

Protein Refseq [NP_061176](#)

MIM [614984](#)

UniProt ID [Q96HY7](#)

**Quality Control
Testing:**



12.5% SDS-PAGE Stained with Coomassie Blue.

 Tel: 1-631-559-9269 1-516-512-3133

 Email: info@creative-biomart.com  Fax: 1-631-938-8127

 45-1 Ramsey Road, Shirley, NY 11967, USA