

Recombinant Human Diablo Homolog (Drosophila), T7-tagged

Cat. No. DIABLO-377H Lot. No. (See product label)

SPECIFICATION

Product Overview	Recombinant human Smac fused to T7-tag. at N-terminus was expressed in E.coli and purified by conventional chromatography techniques, 22 kDa (199 aa).
Species	Human
Source	E.coli
Description	Smac/Diablo is one of the proapoptotic proteins. Smac promotes caspase activation in the cytochrome c/Apaf-1/caspase-9 pathway by binding to inhibitor of apoptosis proteins (IAPs) and removing their inhibitory activity.
Sequences of amino acids	MASMTGGQQM GRGSMAPVIA QKSEPHSLSS EALMRRVAVSL VTDSTSTFLS QTTYALIEAI TEYTKAVYTL TSLYRQYTSL LGKMNSEED EVWQVIIGAR AEMTSKHQEY LKLETTWMTA VGLSEMAAEA AYQTGADQAS ITARNHIQLV KLQVEEVHQL SRKAETKLAE AQIEELRQKT QEEGEERAES EQEAYLRED
Formulation	Liquid. In 20 mM Tris-HCl buffer (pH 7.5)
Purity	> 95% by SDS - PAGE
Concentration	1 mg/ml (determined by Bradford assay)
Storage	Can be stored at +4°C short term (1-2 weeks). For long term storage, aliquot and store at -20°C or -70°C. Avoid repeated freezing and thawing cycles.

 Tel: 1-631-559-9269 1-516-512-3133

 Email: info@creative-biomart.com  Fax: 1-631-938-8127

 45-1 Ramsey Road, Shirley, NY 11967, USA

GENE INFORMATION

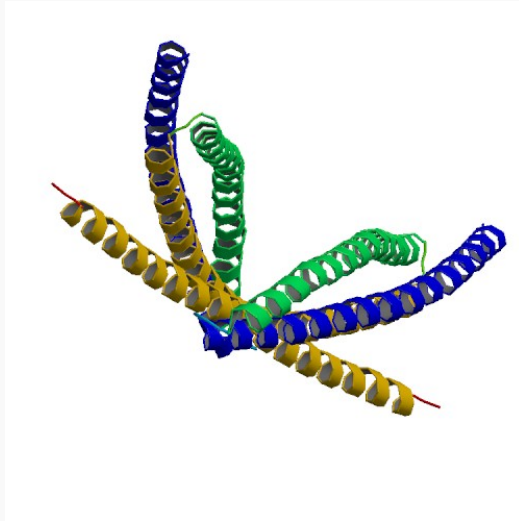
Gene Name	DIABLO diablo homolog (Drosophila) [Homo sapiens]
Synonyms	DIABLO; diablo homolog (Drosophila); SMAC; SMAC3; DIABLO-S; FLJ10537; FLJ25049;Diablo; 0610041G12Rik; mitochondrial Smac protein; direct IAP-binding protein with low pI; second mitochondria-derived activator of caspase; 5` partial; Diablo homolog, mitochondrial; diablo; Direct IAP-binding protein with low Pi; Second mitochondria-derived activator of caspase; Smac protein
Gene ID	56616
mRNA Refseq	NM_019887
Protein Refseq	NP_063940
MIM	605219
UniProt ID	Q9NR28
Chromosome Location	12q24
Pathway	Apoptosis
Function	protein binding

 Tel: 1-631-559-9269 1-516-512-3133

 Email: info@creative-biomart.com  Fax: 1-631-938-8127

 45-1 Ramsey Road, Shirley, NY 11967, USA

PDB rendering based
on 1few



 Tel: 1-631-559-9269 1-516-512-3133

 Email: info@creative-biomart.com  Fax: 1-631-938-8127

 45-1 Ramsey Road, Shirley, NY 11967, USA