

Recombinant Human DICER1 Protein, Myc/DDK-tagged, C13 and N15-labeled

Cat. No. DICER1-1971H Lot. No. (See product label)

SPECIFICATION

Product Overview

DICER1 MS Standard C13 and N15-labeled recombinant protein (NP_085124) with a C-terminal MYC/DDK tag, was expressed in HEK293 cells.

Species

Human

Source

HEK293

Description

This gene encodes a protein possessing an RNA helicase motif containing a DEXH box in its amino terminus and an RNA motif in the carboxy terminus. The encoded protein functions as a ribonuclease and is required by the RNA interference and small temporal RNA (stRNA) pathways to produce the active small RNA component that represses gene expression. Alternative splicing results in multiple transcript variants.

Molecular Mass

218.5 kDa

AA Sequence

MKSPALQPLSMAGLQLMTPASSPMGPFGLPWQQEAIHDNIYTPRKYQVELLEAAL
 DHNTIVCLNTGSGKTFIAVLLTKELSYQIRGDFSRNGKRTVFLVNSANQVAQQVSAV
 RTHSDLKVGGEYSNLEVNASWTKERWNQEFKHKQVLIMTCYVALNVLKNGLSLSDI
 NLLVFDECHLAILDHPYREIMKLCENCPCPRILGLTASILNGKCDPEELEEKIQKLEKI
 LKSNAETATDLVVLDRYTSQPCEIVVDCGPFTDRSGLYERLLMELEEALNFINDCNIS
 VHSKERDSTLISKQILSDCRAVLVVLGPWCADKVAGMMVRELQKYIKHEQEELHRKF
 LLFTDTFLRKIHALCEEHFSPASLDLKFVTPKVIKLEILRKYKPYERQQFESVEWYNN
 RNQDNYSWSDSEDDDEEIEEKEKPETNFPSPFTNILCGIIFVERRYTAVVLNRLI

 Tel: 1-631-559-9269 1-516-512-3133

 Email: info@creative-biomart.com  Fax: 1-631-938-8127

 45-1 Ramsey Road, Shirley, NY 11967, USA

KEAGKQDPELAYISSNFITGHGIGKNQPRNKQMEAEFRKQEEVLRKFRAHETNLLIAT
SIVEEGVDIPKCNLVVRFDLPTEYRSYVQSKGRARAPISNYIMLADTDKIKSFEEDLKT
YKAIEKILRNKCSKSVDTGETDIDPVMDDDDVFPYVLRPDDGGPRVTINTAIGHINR
YCARLPSPDPFTHLAPKCRTRRELDPDGFYSTLYLPINSPLRASIVGPPMSCVRLAERVV
ALICCEKLHKIGELDDHLMVPGKETVKYEEELDLHDEEETSVPGRPGSTKRRQCYPK
AIPCELRDSYPRPDQPCYLYVIGMVLTTPLDELNFRRRKLYPPEdTTRCFGILTAKPI
PQIPHFPVYTRSGEVTISIELKKSGFMLSQMLELITRLHQYIFSHILRLEKPALEFKPT
DADSAYCVLPLNVVNDSSTLDDIDFKFMEIEKSEARIGIPSTKYTKETPFVFKLEDYQD
AVIIPRYRNFQPHRFYVADVTDLTPLSKFPSPEYETFAEYYKTKYNLDLTNLNQPL
LDVDHTSSRLNLLTPRHLNQKGGKALPLSSAEKRKAKWESLQNKQILVPELCAIHIPA
SLWRKAVCLPSILYRLHCLLTAEELRAQTASDAGVGVRSPLADFRYPNLDGFWKCSI
DSKSFISISNSSSAENDNYCKHSTIVPENAAHQGANRTSSLENHDQMSVNCRTLLSE
SPGKLHVEVSADLTAINGLSYNQNLANGSYDLANRDFCQGNQLNYYKQEIPVQPTT
SYSIQNLYSYENQPQPSDECTLLSNKYLDGNANKSTSDGSPVMAVMPGTTDTIQVL
KGRMDSEQSPSIGYSSRTLGPNPGLILQALTLNASDGFNLERLEMLGDSFLKHAITT
YLFCTYPPDAHEGRLSYMRSKKSVCNLYRLGKKKGLPSRMVVSIFDPPVNWLPVGY
VVNQDKSNTDKWEKDEMTKDCMLANGKLEDEYEEDEEEESLMWRAPKEEADYE
DDFLEYDQEHIRFIDNMLMGSGAFVKKISLSPFSTTDSAYEWKMPKKSSLGSMFPSS
DFEDFDYSSWDAMCYLDPSKAVEEDDFVVGFWNPSEENCGVDTGKQSSISYDLHTE
QCIADKSIADCVEALLGCYLTSCGERAAQLFLCSLGLKVLVPIKRTDREKALCPTREN
FNSQQKNLSVSCAAASVASSRSSLVDSEYGCLKIPPRCMFDHPDADKTLNHLISGF
ENFEKKINYRFKNKAYLLQAFTHASYHYNTITDCYQRLEFLGDAILYLITKHLIEDPR
QHSPGVLTDLRSALVNNTIFASLAVKYDYHKEYKAVSPELFHVIDDFVQFQLEKNEM
QGMDSELRRSEEDKEEDIEVPKAMGDIFESLAGAIYMDSGMSLETVWQVYYPM
MRPLIEKFSANVPRSPVRELLEMPEAKFSPAERTYDGKVRVTVEVVGKGFKGV
GRSYRIAKSAAARRALRSLKANQPQVPNSTRTRPLEQKLISEEDLAANDILDYKDDD
DKV

Purity

> 80% as determined by SDS-PAGE and Coomassie blue staining

 Tel: 1-631-559-9269 1-516-512-3133 Email: info@creative-biomart.com  Fax: 1-631-938-8127 45-1 Ramsey Road, Shirley, NY 11967, USA

Stability	Stable for 3 months from receipt of products under proper storage and handling conditions.
Storage	Store at -80 centigrade. Avoid repeated freeze-thaw cycles.
Concentration	50 µg/mL as determined by BCA
Storage Buffer	100 mM glycine, 25 mM Tris-HCl, pH 7.3.

GENE INFORMATION

Gene Name	DICER1 dicer 1, ribonuclease III [Homo sapiens (human)]
Official Symbol	DICER1
Synonyms	DICER1; dicer 1, ribonuclease type III; Dicer1, Dcr 1 homolog (Drosophila); endoribonuclease Dicer; Dicer; dicer 1; double stranded RNA specific endoribonuclease; HERNA; K12H4.8 LIKE; KIAA0928; K12H4.8-LIKE; helicase MOI; helicase-moi; Dicer1, Dcr-1 homolog; helicase with RNase motif; dicer 1, double-stranded RNA-specific endoribonuclease; DCR1; MNG1;
Gene ID	23405
mRNA Refseq	NM_030621
Protein Refseq	NP_085124
MIM	606241
UniProt ID	Q9UPY3

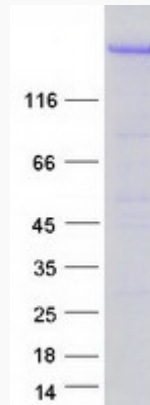
 Tel: 1-631-559-9269 1-516-512-3133

 Email: info@creative-biomart.com  Fax: 1-631-938-8127

 45-1 Ramsey Road, Shirley, NY 11967, USA



SDS-PAGE



Tel: 1-631-559-9269 1-516-512-3133

Email: info@creative-biomart.com Fax: 1-631-938-8127

45-1 Ramsey Road, Shirley, NY 11967, USA