

Recombinant Human DIDO1 Protein, GST-tagged

Cat. No. DIDO1-2351H **Lot. No.** (See product label)

SPECIFICATION

Product Overview	Human DATF1 partial ORF (AAH14489, 321 a.a. - 420 a.a.) recombinant protein with GST-tag at N-terminal.
Species	Human
Source	Wheat Germ
Description	Apoptosis, a major form of cell death, is an efficient mechanism for eliminating unwanted cells and is of central importance for development and homeostasis in metazoan animals. In mice, the death inducer-obliterators-1 gene is upregulated by apoptotic signals and encodes a cytoplasmic protein that translocates to the nucleus upon apoptotic signal activation. When overexpressed, the mouse protein induced apoptosis in cell lines growing in vitro. This gene is similar to the mouse gene and therefore is thought to be involved in apoptosis. Alternatively spliced transcripts have been found for this gene, encoding multiple isoforms. [provided by RefSeq, Jul 2008]
Molecular Mass	36.41 kDa
AA Sequence	ILQVQDETHSETADQQEAKWRPGDADGTDCTSIGTIEQKSSDQGIKGRIEKAANPS GKKLKLKIFQPVIEAPGASKCIGPGCCHVAQPDSVYCSNDCILK
Applications	Enzyme-linked Immunoabsorbent Assay Western Blot (Recombinant protein) Antibody Production Protein Array

 Tel: 1-631-559-9269 1-516-512-3133

 Email: info@creative-biomart.com  Fax: 1-631-938-8127

 45-1 Ramsey Road, Shirley, NY 11967, USA

Notes	Best use within three months from the date of receipt of this protein.
Storage	Store at -80 centigrade. Aliquot to avoid repeated freezing and thawing.
Storage Buffer	50 mM Tris-HCl, 10 mM reduced Glutathione, pH=8.0 in the elution buffer.
GENE INFORMATION	
Gene Name	DIDO1 death inducer-obliterator 1 [Homo sapiens]
Official Symbol	DIDO1
Synonyms	DIDO1; death inducer-obliterator 1; C20orf158, chromosome 20 open reading frame 158 , DATF1, death associated transcription factor 1; death-inducer obliterator 1; BYE1; DIO 1; DIO1; dJ885L7.8; FLJ11265; KIAA0333; death-associated transcription factor 1; DATF1; DIDO2; DIDO3; DIO-1; DATF-1; C20orf158; MGC16140; DKFZp434P1115;
Gene ID	11083
mRNA Refseq	NM_001193369
Protein Refseq	NP_001180298
MIM	604140
UniProt ID	Q9BTC0

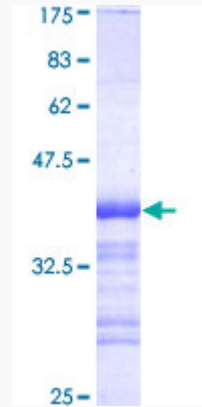
 Tel: 1-631-559-9269 1-516-512-3133

 Email: info@creative-biomart.com  Fax: 1-631-938-8127

 45-1 Ramsey Road, Shirley, NY 11967, USA

Quality Control

Testing:



12.5% SDS-PAGE Stained with Coomassie Blue.

 Tel: 1-631-559-9269 1-516-512-3133

 Email: info@creative-biomart.com  Fax: 1-631-938-8127

 45-1 Ramsey Road, Shirley, NY 11967, USA