

# Active Recombinant Full Length Human DISC1 Protein, C-Flag-tagged

**Cat. No.** DISC1-661HFL    **Lot. No.** (See product label)

## SPECIFICATION

<b>Product Overview</b>	Recombinant Full Length Human DISC1 Protein, fused to Flag-tag at C-terminus, was expressed in Mammalian cells.
<b>Species</b>	Human
<b>Source</b>	Mammalian Cells
<b>Description</b>	This gene encodes a protein with multiple coiled coil motifs which is located in the nucleus, cytoplasm and mitochondria. The protein is involved in neurite outgrowth and cortical development through its interaction with other proteins. This gene is disrupted in a t(1;11)(q42.1;q14.3) translocation which segregates with schizophrenia and related psychiatric disorders in a large Scottish family. Alternate transcriptional splice variants, encoding different isoforms, have been characterized.
<b>Form</b>	25 mM Tris HCl, pH 7.3, 100 mM glycine, 10% glycerol.
<b>Bio-activity</b>	ELISA binding assay
<b>Molecular Mass</b>	93.4 kDa
<b>AA Sequence</b>	MPGGGPQGAPAAAGGGGVSHRAGSRDCLPPAACFRRRRLARRPGYMRSSTGPGI GFLSPAVGTLFRFPGG VSGEESHSESRARQCGLDSRGLLVRSVSKSAAAPT SVRGTSAHFGIQLRGGTRLPDRLSWPCGPGS AGWQQEFAAMDSSETLDASWEAA CSDGARRVRAAGSLPSAELSSNSCSPGCGPEVPPTPPGSHSAFTSSF SFIRLSLGS

 Tel: 1-631-559-9269    1-516-512-3133

 Email: [info@creative-biomart.com](mailto:info@creative-biomart.com)     Fax: 1-631-938-8127

 45-1 Ramsey Road, Shirley, NY 11967, USA

AGERGEAEGCPPSREAESHQCSPQEMGAKAASLDGPHEDPRCLSRPFSLLATRVS  
 ADLAQA ARNSSRPERDMHSLPDMDPGSSSSLDPSLAGCGGDGSSGSGDAHSWD  
 TLLRKWEPVLRDCLLRNRRQMEV ISLRLKLQKLQEDAVENDDYDKAETLQQRLEDL  
 EQEKISLHFQLPSRQPALSSFLGHLAAQVQAALRRGA TQQASGDDTHTPLRMEPRL  
 LEPTAQDSLHVSITRRDWLLQEKKQLQKEIEALQARMFVLEAKDQQLRREI EEQEQ  
 QLQWQGCDLTPLVGQLSLGQLQEVSKALQDTLASAGQIPFHAEPETIRSLQERIKS  
 LNLSLKEI TTKVCMSEKFCSTLRKKVNDIETQLPALLEAKMHASGNHFWTAKDLTEE  
 IRSLTSEREGLEGLLSKLLV LSSRNVKKLGSVKEDYNRLRREVEHQETAYETSVKEN  
 TMKYMETLKNKLCCKCPLLKGVWEADLEACRL LIQSLQLQEARGSLSVEDERQM  
 DDLEGAAPPPIPPRLHSEDKRKTPLKVLEEWKTHLIPSLHCAGGEQKEE SYILSAELG  
 EKCEDIGKLLYLEDQLHTAIHSHDEDLIQSLRRELQMVKETLQAMILQLQPAKEAGE  
 REA  
 AASCMTAGVHEAQATRTRPLEQKLISEEDLAANDILDYKDDDDKV

<b>Purity</b>	> 80% as determined by SDS-PAGE and Coomassie blue staining.
<b>Stability</b>	Stable for 12 months from the date of receipt of the product under proper storage and handling conditions. Avoid repeated freeze-thaw cycles.
<b>Storage</b>	Store at -80 centigrade.
<b>Concentration</b>	>50 ug/mL as determined by microplate BCA method.
<b>Preparation</b>	Recombinant protein was captured through anti-DDK affinity column followed by conventional chromatography steps.
<b>Full Length</b>	Full L.

## GENE INFORMATION

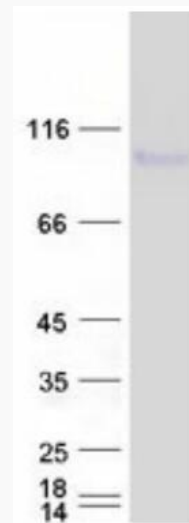
**Gene Name** [DISC1 DISC1 scaffold protein \[ Homo sapiens \(human\) \]](#)

 Tel: 1-631-559-9269 1-516-512-3133

 Email: [info@creative-biomart.com](mailto:info@creative-biomart.com)  Fax: 1-631-938-8127

 45-1 Ramsey Road, Shirley, NY 11967, USA

<b>Official Symbol</b>	DISC1
<b>Synonyms</b>	SCZD9; C1orf136
<b>Gene ID</b>	27185
<b>mRNA Refseq</b>	NM_018662.3
<b>Protein Refseq</b>	NP_061132.2
<b>MIM</b>	605210
<b>UniProt ID</b>	Q9NRI5



Coomassie blue staining of purified DISC1 protein.

Tel: 1-631-559-9269 1-516-512-3133

Email: [info@creative-biomart.com](mailto:info@creative-biomart.com) Fax: 1-631-938-8127

45-1 Ramsey Road, Shirley, NY 11967, USA