

Recombinant Human DISC1 Protein, Myc/DDK-tagged, C13 and N15-labeled

Cat. No. DISC1-6678H **Lot. No.** (See product label)

SPECIFICATION

Product Overview	DISC1 MS Standard C13 and N15-labeled recombinant protein (NP_061132) with a C-terminal MYC/DDK tag, was expressed in HEK293 cells.
Species	Human
Source	HEK293
Description	This gene encodes a protein with multiple coiled coil motifs which is located in the nucleus, cytoplasm and mitochondria. The protein is involved in neurite outgrowth and cortical development through its interaction with other proteins. This gene is disrupted in a t(1;11)(q42.1;q14.3) translocation which segregates with schizophrenia and related psychiatric disorders in a large Scottish family. Alternate transcriptional splice variants, encoding different isoforms, have been characterized.
Molecular Mass	93.4 kDa
AA Sequence	MPGGGPQGAPAAAGGGGVSHRAGSRDCLPPAACFRRRRLARRPGYMRSSTGPGI GFLSPAVGTLFRFPGGVSGEESHHSRARRQCGLDSRGLLVRSPVSKSAAAPTPTS VRGTSAHFGIQLRGGTRLPDRLSWPCGPGSAGWQQEFAAMDSSETLDASWEAAC SDGARRVRAAGSLPSAELSSNSCSPGCGPEVPPTPPGSHSAFTSSFSFIRLSLGSA GERGEAEGCPPSREAESHQSPQEMGAKAASLDGPHEDPRCLSRPFSLLATRVSA DLAQAARNSSRPERDMHSLPDMDPGSSSSLDPSLAGCGGDGSSGSGDAHSWDTL LRKWEPVLRDCLLRNRRQMEVISLRLKLQKLQEDAVENDDYDKAETLQQRLEDLEQ

 Tel: 1-631-559-9269 1-516-512-3133

 Email: info@creative-biomart.com  Fax: 1-631-938-8127

 45-1 Ramsey Road, Shirley, NY 11967, USA

EKISLHFQLPSRQPALSSFLGHLLAAQVQAALRRGATQQASGDDHTPLRMEPRLLE
 PTAQDSLHVSITRRDWLLQEKKQLQKEIEALQARMFVLEAKDQQLRREIEEQEQQL
 QWQGCDLTPLVGGQLSLGQLQEVSALQDQLASAGQIPFHAEPETIRSLQERIKSLN
 LSLKEITTKVCMSEKFCSTLRKKVNDIETQLPALLEAKMHAISGNHFWTAKDLTEEIRS
 LTSEREGLEGLLSKLLVLSSRNKLGSVKEDYNRLRREVEHQETAYETSVKENTMK
 YMETLKNKLCCKCPLLGVWEADLEACRLLIQSLQLQEARGSLSVEDERQMDDLE
 GAAPPIPPRLHSEDKRKTPLKVLLEWKTHLIPSLHCAGGEQKEESYILSAELGEKCED
 IGKKLLYLEDQLHTAIHSHDEDLIQSLRRELQMVKETLQAMILQLQPAKEAGEREAAA
 SCMTAGVHEAQATRTRPLEQKLISEEDLAANDILDYKDDDDKV

Purity > 80% as determined by SDS-PAGE and Coomassie blue staining

Stability Stable for 3 months from receipt of products under proper storage and handling conditions.

Storage Store at -80 centigrade. Avoid repeated freeze-thaw cycles.

Concentration 50 µg/mL as determined by BCA

Storage Buffer 100 mM glycine, 25 mM Tris-HCl, pH 7.3.

GENE INFORMATION

Gene Name DISC1 disrupted in schizophrenia 1 [Homo sapiens (human)]

Official Symbol DISC1

Synonyms DISC1; disrupted in schizophrenia 1; disrupted in schizophrenia 1 protein; SCZD9; C1orf136; FLJ13381; FLJ21640; FLJ25311; FLJ41105; KIAA0457;

Gene ID 27185

 Tel: 1-631-559-9269 1-516-512-3133

 Email: info@creative-biomart.com  Fax: 1-631-938-8127

 45-1 Ramsey Road, Shirley, NY 11967, USA

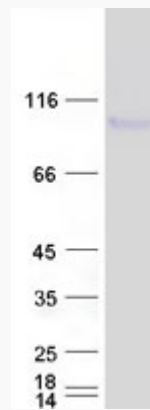
mRNA Refseq [NM_018662](#)

Protein Refseq [NP_061132](#)

MIM [605210](#)

UniProt ID [Q9NRI5](#)

SDS-PAGE



 Tel: 1-631-559-9269 1-516-512-3133

 Email: info@creative-biomart.com  Fax: 1-631-938-8127

 45-1 Ramsey Road, Shirley, NY 11967, USA