

Recombinant Human DIXDC1 protein, His & T7-tagged

Cat. No. DIXDC1-1837H Lot. No. (See product label)

SPECIFICATION

Product Overview	Recombinant Human DIXDC1 aa. (Ser485~Asn683 (Accession # Q155Q3)) fused with N-terminal His & T7 tag was produced in E. coli cells.
Species	Human
Source	E.coli
ProteinLength	Ser485~Asn683
Description	The protein encoded by this gene is a positive regulator of the Wnt signaling pathway. The encoded protein is found associated with gamma tubulin at the centrosome. Alternative splicing results in multiple transcript variants encoding different isoforms.
Form	Freeze-dried powder
Molecular Mass	Predicted Molecular Mass: 26.2kDa
Endotoxin	<1.0EU per 1ug (determined by the LAL method)
Purity	>95%
Applications	SDS-PAGE; WB; ELISA; IP.
Stability	The thermal stability is described by the loss rate. The loss rate was determined by accelerated thermal degradation test, that is, incubate the protein at 37°C for 48h,

 Tel: 1-631-559-9269 1-516-512-3133

 Email: info@creative-biomart.com  Fax: 1-631-938-8127

 45-1 Ramsey Road, Shirley, NY 11967, USA

and no obvious degradation and precipitation were observed. The loss rate is less than 5% within the expiration date under appropriate storage condition.

Storage

Avoid repeated freeze/thaw cycles. Store at 2-8°C for one month. Aliquot and store at -80°C for 12 months.

Storage buffer

Supplied as lyophilized form in PBS, pH7.4, containing 5% trehalose, 0.01% sarcosyl.

Reconstitution

Reconstitute in sterile PBS, pH7.2-pH7.4.

Isoelectric Point

6.6

GENE INFORMATION

Gene Name

DIXDC1 DIX domain containing 1 [Homo sapiens (human)]

Official Symbol

DIXDC1

Synonyms

DIXDC1; DIX domain containing 1; CCD1; dixin; coiled-coil protein DIX1

Gene ID

85458

mRNA Refseq

NM_001037954.3

Protein Refseq

NP_001033043.1

UniProt ID

Q155Q3

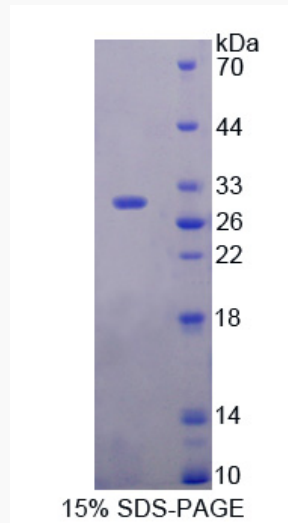
 Tel: 1-631-559-9269 1-516-512-3133

 Email: info@creative-biomart.com  Fax: 1-631-938-8127

 45-1 Ramsey Road, Shirley, NY 11967, USA



SDS-PAGE



Tel: 1-631-559-9269 1-516-512-3133

Email: info@creative-biomart.com Fax: 1-631-938-8127

45-1 Ramsey Road, Shirley, NY 11967, USA