

Recombinant Human DIXDC1 Protein (Ser485-Asn683), N-His tagged

Cat. No. DIXDC1-2255H Lot. No. (See product label)

SPECIFICATION

Product Overview	Recombinant human DIXDC1 (Ser485-Asn683) fused with N-His tag was expressed in E. coli.
Species	Human
Source	E.coli
ProteinLength	Ser485-Asn683
Form	Lyophilized powder/frozen liquid
Molecular Mass	24.83 kDa
Purity	>90% as determined by SDS-PAGE
Notes	For research use only.
Storage	Use a manual defrost freezer and avoid repeated freeze thaw cycles. Store at 2 to 8 centigrade for one week. Store at -20 to -80 centigrade for twelve months from the date of receipt.
Storage Buffer	0.01M PBS, pH 7.4, 0.02% NLS
Reconstitution	Reconstitute in sterile water for a stock solution.

 Tel: 1-631-559-9269 1-516-512-3133

 Email: info@creative-biomart.com  Fax: 1-631-938-8127

 45-1 Ramsey Road, Shirley, NY 11967, USA

Shipping They are shipped out with dry ice/blue ice unless customers require otherwise.

GENE INFORMATION

Gene Name DIXDC1 DIX domain containing 1 [Homo sapiens (human)]

Official Symbol DIXDC1

Synonyms DIXDC1; DIX domain containing 1; dixin; KIAA1735; coiled-coil-DIX1; coiled-coil protein DIX1; DIX domain-containing protein 1; CCD1;

Gene ID 85458

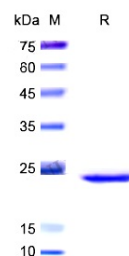
mRNA Refseq NM_001037954

Protein Refseq NP_001033043

MIM 610493

UniProt ID Q155Q3

SDS-PAGE



 Tel: 1-631-559-9269 1-516-512-3133

 Email: info@creative-biomart.com  Fax: 1-631-938-8127

 45-1 Ramsey Road, Shirley, NY 11967, USA