

## Recombinant Human DIXDC1 Protein, GST-tagged

Cat. No. DIXDC1-2642H Lot. No. (See product label)

### SPECIFICATION

<b>Product Overview</b>	Human DIXDC1 full-length ORF ( AAH33034, 1 a.a. - 472 a.a.) recombinant protein with GST-tag at N-terminal.
<b>Species</b>	Human
<b>Source</b>	Wheat Germ
<b>Description</b>	The protein encoded by this gene is a positive regulator of the Wnt signaling pathway. The encoded protein is found associated with gamma tubulin at the centrosome. Alternative splicing results in multiple transcript variants encoding different isoforms. [provided by RefSeq, Jun 2013]
<b>Molecular Mass</b>	77.66 kDa
<b>AA Sequence</b>	<p>           MGGTQVKCLTSPSPIHSAKSESIITQSEEKADFVIPAEGIENRTEGTDSPLSRDWRP            GSPGTYLETSWEEQLLEQQEYLEKEMEEAKKMISGLQALLNGSLPEDEQERPLAL            CEPGVNPEEQLIIQSRLDQSMEENQDLKCELLKCKQEARNLQGDKDALQQRLTQQD            TSVLQLKQELLRANMDKDELHNQNVLDLQRKLDERNRLLGEYKKELGQKDRLLQQH            QAKLEEALRKLSDVSYHQVDLERELEHKDVL LAHCMKREADEATNYNSHNSQSNGF            LLPTAGKGATSVSNRGTSDLQLVRDALRSLRNSFSGHDPQHHTIDSLEQGISSLMER            LHMVETQKKQERKVRVKSPTQVGSEYRESWPPNSKLPHSQSSPTVSSTCTKVLY            FTDRSLTPFMVNIPKRLEEVTLKDFKAAIDREGNHRYHFKALDPEFGTVKEEIFHDDD            AIPGWEGKIVAWVEEDHGEN         </p>
<b>Applications</b>	Enzyme-linked Immunoabsorbent Assay

Tel: 1-631-559-9269 1-516-512-3133

Email: [info@creative-biomart.com](mailto:info@creative-biomart.com) Fax: 1-631-938-8127

45-1 Ramsey Road, Shirley, NY 11967, USA

Western Blot (Recombinant protein)  
 Antibody Production  
 Protein Array

<b>Notes</b>	Best use within three months from the date of receipt of this protein.
<b>Storage</b>	Store at -80 centigrade. Aliquot to avoid repeated freezing and thawing.
<b>Storage Buffer</b>	50 mM Tris-HCl, 10 mM reduced Glutathione, pH=8.0 in the elution buffer.

## GENE INFORMATION

<b>Gene Name</b>	DIXDC1 DIX domain containing 1 [ Homo sapiens ]
<b>Official Symbol</b>	DIXDC1
<b>Synonyms</b>	DIXDC1; DIX domain containing 1; dixin; KIAA1735; coiled-coil-DIX1; coiled-coil protein DIX1; DIX domain-containing protein 1; CCD1;
<b>Gene ID</b>	85458
<b>mRNA Refseq</b>	NM_001037954
<b>Protein Refseq</b>	NP_001033043
<b>MIM</b>	610493
<b>UniProt ID</b>	Q155Q3

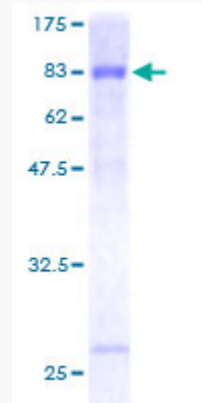
 Tel: 1-631-559-9269 1-516-512-3133

 Email: [info@creative-biomart.com](mailto:info@creative-biomart.com)  Fax: 1-631-938-8127

 45-1 Ramsey Road, Shirley, NY 11967, USA

**Quality Control**

**Testing:**



12.5% SDS-PAGE Stained with Coomassie Blue.

 Tel: 1-631-559-9269 1-516-512-3133

 Email: [info@creative-biomart.com](mailto:info@creative-biomart.com)  Fax: 1-631-938-8127

 45-1 Ramsey Road, Shirley, NY 11967, USA