

## Recombinant Human DKK1 protein, His-tagged

Cat. No. DKK1-022H Lot. No. (See product label)

### SPECIFICATION

<b>Product Overview</b>	Recombinant Human DKK1 (Thr32-His266) protein was fused to His-tag at C-terminus and expressed in human 293 cells (HEK293).
<b>Species</b>	Human
<b>Source</b>	HEK293
<b>ProteinLength</b>	Thr32-His266
<b>Description</b>	<p>Members of the dickkopf-related protein family (DKK-1, -2, -3, and -4) are secreted proteins with two cysteine-rich domains separated by a linker region. And DKK1 takes part in embryonic development through its inhibition of the WNT signaling pathway, binds to LRP6 with high affinity and prevents the Frizzled-Wnt-LRP6 complex formation in response to Wnts. DKK1 promotes LRP6 internalization and degradation when it forms a ternary complex with the cell surface receptor Kremen. DKK1 not only functions as a head inducer during development, but also regulates joint remodeling and bone formation, which suggests roles for DKK1 in the pathogenesis of rheumatoid arthritis and multiple myeloma. More recently research reported, DKK1 impacts eye development from a defined developmental time point on, and is critical for lens separation from the surface ectoderm via <math>\beta</math>-catenin mediated Pdgfra and E-cadherin expression.</p>
<b>Predicted N Terminal</b>	Thr32
<b>Form</b>	Lyophilized from 0.22

 Tel: 1-631-559-9269 1-516-512-3133

 Email: [info@creative-biomart.com](mailto:info@creative-biomart.com)  Fax: 1-631-938-8127

 45-1 Ramsey Road, Shirley, NY 11967, USA

	µm filtered solution in PBS, pH7.4, 10% trehalose.
<b>Molecular Mass</b>	The protein has a calculated MW of 25.8 kDa. The protein migrates as 35-45 kDa under reducing (R) condition (SDS-PAGE) due to glycosylation.
<b>Endotoxin</b>	Less than 1.0 EU per µg by the LAL method.
<b>Purity</b>	>95% as determined by SDS-PAGE.
<b>Storage</b>	<p>For long term storage, the product should be stored at lyophilized state at -20 centigrade or lower.</p> <p>Please avoid repeated freeze-thaw cycles.</p> <p>This product is stable after storage at:</p> <p>-20 to -70 centigrade for 12 months in lyophilized state;</p> <p>-70 centigrade for 3 months under sterile conditions after reconstitution.</p>
<b>Reconstitution</b>	It is recommended that sterile water be added to the vial to prepare a stock solution of 0.2 ug/ul. Centrifuge the vial at 4°C before opening to recover the entire contents.
<b>GENE INFORMATION</b>	
<b>Gene Name</b>	DKK1
<b>Official Symbol</b>	DKK1
<b>Synonyms</b>	DKK1; dickkopf 1 homolog (Xenopus laevis); dickkopf (Xenopus laevis) homolog 1; dickkopf-related protein 1; DKK 1; SK; hDkk-1; dickkopf-1 like; dickkopf related protein-1; DKK-1
<b>Gene ID</b>	22943

 Tel: 1-631-559-9269 1-516-512-3133

 Email: [info@creative-biomart.com](mailto:info@creative-biomart.com)  Fax: 1-631-938-8127

 45-1 Ramsey Road, Shirley, NY 11967, USA

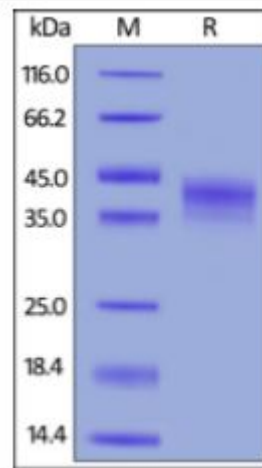
mRNA Refseq [NM\\_012242](#)

Protein Refseq [NP\\_036374](#)

MIM [605189](#)

UniProt ID [O94907](#)

**SDS-PAGE of DKK1-022H**



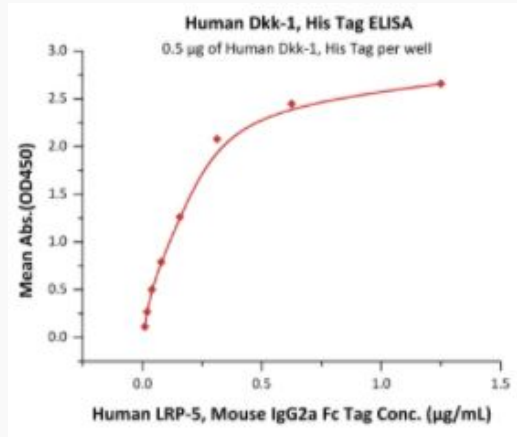
Human Dkk-1, His Tag on SDS-PAGE under reducing (R) condition. The gel was stained overnight with Coomassie Blue. The purity of the protein is greater than 95%.

 Tel: 1-631-559-9269 1-516-512-3133

 Email: [info@creative-biomart.com](mailto:info@creative-biomart.com)  Fax: 1-631-938-8127

 45-1 Ramsey Road, Shirley, NY 11967, USA

**Bioactivity-ELISA of  
DKK1-022H**



Immobilized Human Dkk-1, His Tag at 5 µg/mL (100 µL/well) can bind Human LRP-5, Mouse IgG2a Fc Tag with a linear range of 0.01-0.156 µg/mL (QC tested).

 Tel: 1-631-559-9269 1-516-512-3133

 Email: [info@creative-biomart.com](mailto:info@creative-biomart.com)  Fax: 1-631-938-8127

 45-1 Ramsey Road, Shirley, NY 11967, USA