

Recombinant Cynomolgus/Rhesus macaque DKK1 protein, His-tagged

Cat. No. DKK1-1629C **Lot. No.** (See product label)

SPECIFICATION

Product Overview	Recombinant Cynomolgus/Rhesus macaque DKK1 protein(XP_005565907.1/NP_001247454.1)(Thr32-His266), fused with C-terminal His tag, was expressed in HEK293.
Species	Cynomolgus/Rhesus macaque
Source	C-His
ProteinLength	Thr32-His266
Tag	C-His
Form	Lyophilized from 0.22µm filtered solution in PBS (pH 7.4). Normally 8% trehalose is added as protectant before lyophilization.
Bio-activity	Immobilized Cynomolgus/Rhesus macaque DKK1, His Tag at 0.2µg/ml (100µl/Well) on the plate. Dose response curve for Anti-DKK1 Antibody, hFc Tag with the EC50 of 3.2ng/ml determined by ELISA.
Molecular Mass	The protein has a predicted MW of 26.85 kDa. Due to glycosylation, the protein migrates to 40-50 kDa based on Tris-Bis PAGE result.
Endotoxin	Less than 1EU per µg by the LAL method.

 Tel: 1-631-559-9269 1-516-512-3133

 Email: info@creative-biomart.com  Fax: 1-631-938-8127

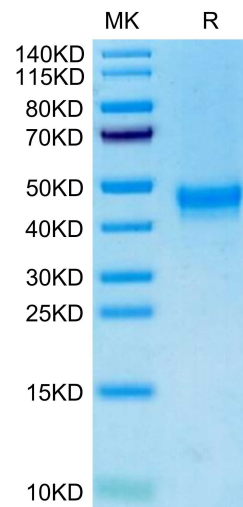
 45-1 Ramsey Road, Shirley, NY 11967, USA

Purity > 95% as determined by Tris-Bis PAGE; > 95% as determined by HPLC.

Storage Reconstituted protein stable at -80°C for 12 months, 4°C for 1 week. Use a manual defrost freezer and avoid repeated freeze-thaw cycles.

Reconstitution Centrifuge tubes before opening. Reconstituting to a concentration more than 100 µg/ml is recommended. Dissolve the lyophilized protein in distilled water.

Tris-Bis PAGE



 Tel: 1-631-559-9269 1-516-512-3133

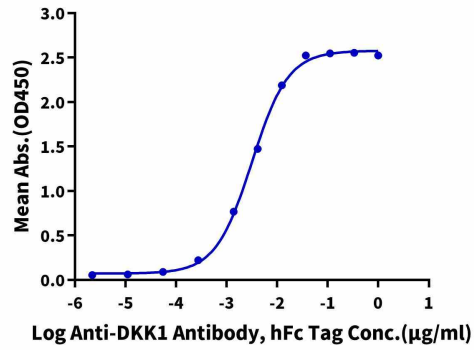
 Email: info@creative-biomart.com  Fax: 1-631-938-8127

 45-1 Ramsey Road, Shirley, NY 11967, USA

ELISA

Cynomolgus/Rhesus macaque DKK1, His Tag ELISA

0.02µg Cynomolgus/Rhesus macaque DKK1, His Tag Per Well



 Tel: 1-631-559-9269 1-516-512-3133

 Email: info@creative-biomart.com  Fax: 1-631-938-8127

 45-1 Ramsey Road, Shirley, NY 11967, USA