

Recombinant Human DKK1 protein, hFc-Avi-tagged, Biotinylated

Cat. No. DKK1-1648H Lot. No. (See product label)

SPECIFICATION

Product Overview	Biotinylated Recombinant Human DKK1 protein(O94907)(Met178-His266), fused with C-terminal hFc and Avi tag, was expressed in HEK293.
Species	Human
Source	HEK293
ProteinLength	Met178-His266
Tag	C-hFc-Avi
Conjugation/Label	Biotin
Form	Lyophilized from 0.22µm filtered solution in 20mM NaAc, 150mM NaCl (pH 5.0). Normally 8% trehalose is added as protectant before lyophilization.
Bio-activity	Immobilized Human LRP-6, mFc Tag at 5µg/ml (100µl/well) on the plate. Dose response curve for Biotinylated DKK1 C terminal Domain, hFc Tag with the EC50 of 2.07µg/ml determined by ELISA.
Molecular Mass	The protein has a predicted MW of 38.69 kDa. Due to glycosylation, the protein migrates to 50-55 kDa based on Tris-Bis PAGE result.
Endotoxin	Less than 1EU per µg by the LAL method.

 Tel: 1-631-559-9269 1-516-512-3133

 Email: info@creative-biomart.com  Fax: 1-631-938-8127

 45-1 Ramsey Road, Shirley, NY 11967, USA

Purity	> 95% as determined by Tris-Bis PAGE.
Storage	Reconstituted protein stable at -80°C for 12 months, 4°C for 1 week. Use a manual defrost freezer and avoid repeated freeze-thaw cycles.
Reconstitution	Centrifuge tubes before opening. Reconstituting to a concentration more than 100 µg/ml is recommended. Dissolve the lyophilized protein in 20mM NaAc, 150mM NaCl (pH 5.0).
Conjugation	Biotin

GENE INFORMATION

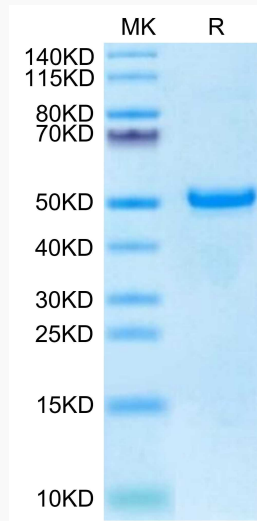
Gene Name	DKK1 dickkopf 1 homolog (Xenopus laevis) [Homo sapiens]
Official Symbol	DKK1
Synonyms	DKK1; dickkopf 1 homolog (Xenopus laevis); dickkopf (Xenopus laevis) homolog 1; dickkopf-related protein 1; DKK 1; SK; hDkk-1; dickkopf-1 like; dickkopf related protein-1; DKK-1;
Gene ID	22943
mRNA Refseq	NM_012242
Protein Refseq	NP_036374
MIM	605189
UniProt ID	O94907

 Tel: 1-631-559-9269 1-516-512-3133

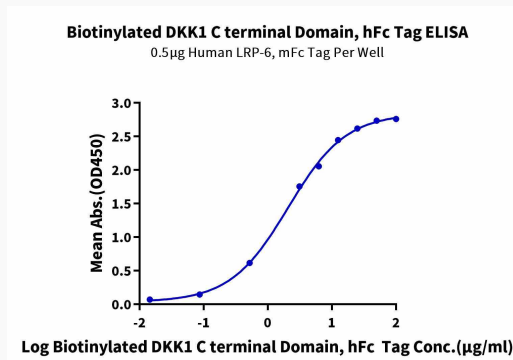
 Email: info@creative-biomart.com  Fax: 1-631-938-8127

 45-1 Ramsey Road, Shirley, NY 11967, USA

Tris-Bis PAGE



ELISA



 Tel: 1-631-559-9269 1-516-512-3133

 Email: info@creative-biomart.com  Fax: 1-631-938-8127

 45-1 Ramsey Road, Shirley, NY 11967, USA