

## Recombinant Human DKK1 protein, hFc-Avi-tagged

**Cat. No.** DKK1-1700H    **Lot. No.** (See product label)

### SPECIFICATION

<b>Product Overview</b>	Recombinant Human DKK1 protein(O94907)(Met178-His266), fused with C-terminal hFc and Avi tag, was expressed in HEK293.
<b>Species</b>	Human
<b>Source</b>	C-hFc-Avi
<b>ProteinLength</b>	Met178-His266
<b>Tag</b>	C-hFc-Avi
<b>Form</b>	Supplied as 0.22µm filtered solution in 20mM NaAc, 150mM NaCl (pH 5.0).
<b>Bio-activity</b>	Immobilized Human DKK1 C terminal Domain, hFc Tag at 0.5µg/ml (100µl/Well) on the plate. Dose response curve for Biotinylated Anti-DKK1 Antibody, hFc Tag with the EC50 of 26.7ng/ml determined by ELISA.
<b>Molecular Mass</b>	The protein has a predicted MW of 38.69 kDa. Due to glycosylation, the protein migrates to 45-55 kDa based on Tris-Bis PAGE result.
<b>Endotoxin</b>	Less than 1EU per µg by the LAL method.
<b>Purity</b>	> 95% as determined by Tris-Bis PAGE.
<b>Storage</b>	Valid for 12 months from date of receipt when stored at -80°C.;Recommend to aliquot

 Tel: 1-631-559-9269    1-516-512-3133

 Email: [info@creative-biomart.com](mailto:info@creative-biomart.com)     Fax: 1-631-938-8127

 45-1 Ramsey Road, Shirley, NY 11967, USA

the protein into smaller quantities for optimal storage. Please do not repeated freeze-thaw cycles.

**Reconstitution**

It is recommended that sterile water be added to the vial to prepare a stock solution of 0.2 ug/ul. Centrifuge the vial at 4°C before opening to recover the entire contents.

## GENE INFORMATION

**Gene Name** [DKK1 dickkopf 1 homolog \(Xenopus laevis\) \[ Homo sapiens \]](#)

**Official Symbol** [DKK1](#)

**Synonyms** DKK1; dickkopf 1 homolog (Xenopus laevis); dickkopf (Xenopus laevis) homolog 1; dickkopf-related protein 1; DKK 1; SK; hDkk-1; dickkopf-1 like; dickkopf related protein-1; DKK-1;

**Gene ID** [22943](#)

**mRNA Refseq** [NM\\_012242](#)

**Protein Refseq** [NP\\_036374](#)

**MIM** [605189](#)

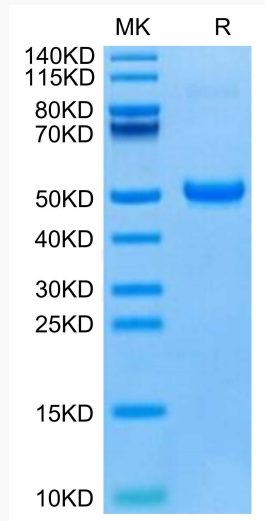
**UniProt ID** [O94907](#)

 Tel: 1-631-559-9269 1-516-512-3133

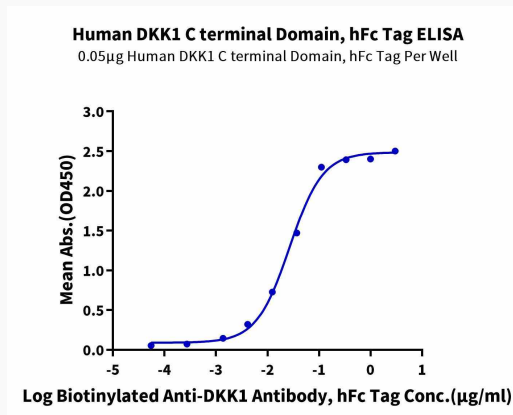
 Email: [info@creative-biomart.com](mailto:info@creative-biomart.com)  Fax: 1-631-938-8127

 45-1 Ramsey Road, Shirley, NY 11967, USA

**Tris-Bis PAGE**



**ELISA**



 Tel: 1-631-559-9269 1-516-512-3133

 Email: [info@creative-biomart.com](mailto:info@creative-biomart.com)  Fax: 1-631-938-8127

 45-1 Ramsey Road, Shirley, NY 11967, USA