

Active Recombinant Rhesus macaque DKK1 protein(256Asn/Gln), His-tagged

Cat. No. DKK1-2339R **Lot. No.** (See product label)

SPECIFICATION

Product Overview	Active Recombinant Rhesus macaque DKK1 protein(XP_001098844.1)(Met 1-His 266) (256 Asn / Gln) was expressed in HEK293, fused with a C-terminal polyhistidine tag.
Species	Rhesus macaque
Source	HEK293
ProteinLength	1-266 aa, 256Asn/Gln
Form	Lyophilized from sterile PBS, pH 7.4.
Bio-activity	Measured by its ability to inhibit Wnt3a induced alkaline phosphatase production by C3H10T1/2 2A6 mouse embryonal fibroblast cells. The ED50 for this effect is typically 0.5-3 µg/ml in the presence of 10 ng/mL of Wnt3a.
Molecular Mass	The recombinant rhesus DKK1 comprises 246 amino acids with a predicted molecular mass of 27.2 kDa. As a result of glycosylation, the apparent molecular mass of rhesus DKK1 is approximately 38-43 kDa in SDS-PAGE under reducing conditions.
Endotoxin	< 1.0 EU per µg of the protein as determined by the LAL method.
Purity	> 97 % as determined by SDS-PAGE

 Tel: 1-631-559-9269 1-516-512-3133

 Email: info@creative-biomart.com  Fax: 1-631-938-8127

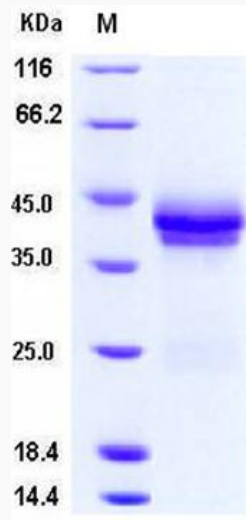
 45-1 Ramsey Road, Shirley, NY 11967, USA

Storage

Store it under sterile conditions at -20°C to -80°C upon receiving. Recommend to aliquot the protein into smaller quantities for optimal storage. Avoid repeated freeze-thaw cycles.

Reconstitution

It is recommended that sterile water be added to the vial to prepare a stock solution of 0.2 ug/ul. Centrifuge the vial at 4°C before opening to recover the entire contents.

SDS-PAGE

 Tel: 1-631-559-9269 1-516-512-3133

 Email: info@creative-biomart.com  Fax: 1-631-938-8127

 45-1 Ramsey Road, Shirley, NY 11967, USA