

# Recombinant Rhesus macaque DKK1 protein(256 Asn/Gln), mFc-tagged

**Cat. No.** DKK1-2340R    **Lot. No.** (See product label)

## SPECIFICATION

<b>Product Overview</b>	Recombinant Rhesus macaque DKK1 protein(XP_001098844.1)(Met 1-His 266) (256Asn/Gln) was expressed in HEK293, fused with the Fc region of mouse IgG1 at the C-terminus via a peptide linker.
<b>Species</b>	Rhesus macaque
<b>Source</b>	HEK293
<b>ProteinLength</b>	1-266 aa, 256Asn/Gln
<b>Form</b>	Lyophilized from sterile PBS, pH 7.4.
<b>Molecular Mass</b>	The recombinant rhesus DKK1/mFc chimera is a disulfide-linked homodimer. The reduced monomer comprises 479 amino acids and has a predicted molecular mass of 53.5 kDa. As a result of glycosylation, the apparent molecular mass of rhesus DKK1/mFc monomer is approximately 60-70 kDa in SDS-PAGE under reducing conditions.
<b>Endotoxin</b>	< 1.0 EU per µg of the protein as determined by the LAL method.
<b>Purity</b>	> 90 % as determined by SDS-PAGE
<b>Storage</b>	Store it under sterile conditions at -20°C to -80°C upon receiving. Recommend to aliquot the protein into smaller quantities for optimal storage. Avoid repeated freeze-

 Tel: 1-631-559-9269    1-516-512-3133

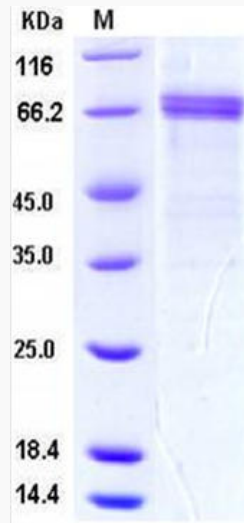
 Email: [info@creative-biomart.com](mailto:info@creative-biomart.com)     Fax: 1-631-938-8127

 45-1 Ramsey Road, Shirley, NY 11967, USA

thaw cycles.

**Reconstitution**

It is recommended that sterile water be added to the vial to prepare a stock solution of 0.2 ug/ul. Centrifuge the vial at 4°C before opening to recover the entire contents.

**SDS-PAGE**

Tel: 1-631-559-9269 1-516-512-3133

Email: [info@creative-biomart.com](mailto:info@creative-biomart.com) Fax: 1-631-938-8127

45-1 Ramsey Road, Shirley, NY 11967, USA