

## Recombinant Human DKK1 protein, His-tagged

Cat. No. DKK1-32H Lot. No. (See product label)

### SPECIFICATION

<b>Product Overview</b>	Recombinant Human DKK1 protein(NP_036374.1) (Met 2-His 266) was expressed in HEK293 with a C-terminal polyhistidine tag.
<b>Species</b>	Human
<b>Source</b>	HEK293
<b>ProteinLength</b>	2-266 aa
<b>Form</b>	Lyophilized from sterile PBS, pH 7.4.
<b>Bio-activity</b>	Measured by its ability to inhibit Wnt3a-induced alkaline phosphatase production by C3H10T1/2 cells. The ED50 for this effect is approximately 0.1-0.4 µg/ml in the presence of 10 ng/mL of mouse Wnt3a.
<b>Molecular Mass</b>	The recombinant human DKK1 protein consists of 235 amino acids and has a calculated molecular mass of 25.8 kDa. In SDS-PAGE under reducing conditions, the apparent molecular mass of rh DKK1 is approximately 45 kDa due to glycosylation.
<b>Endotoxin</b>	< 1.0 EU per µg of the protein as determined by the LAL method.
<b>Purity</b>	> 90 % as determined by SDS-PAGE
<b>Storage</b>	Store it under sterile conditions at -20°C to -80°C upon receiving. Recommend to aliquot the protein into smaller quantities for optimal storage. Avoid repeated freeze-

 Tel: 1-631-559-9269 1-516-512-3133

 Email: [info@creative-biomart.com](mailto:info@creative-biomart.com)  Fax: 1-631-938-8127

 45-1 Ramsey Road, Shirley, NY 11967, USA

thaw cycles.

**Reconstitution**

It is recommended that sterile water be added to the vial to prepare a stock solution of 0.2 ug/ul. Centrifuge the vial at 4°C before opening to recover the entire contents.

## GENE INFORMATION

**Gene Name** [DKK1 dickkopf 1 homolog \(Xenopus laevis\) \[ Homo sapiens \]](#)

**Official Symbol** [DKK1](#)

**Synonyms** DKK1; dickkopf 1 homolog (Xenopus laevis); dickkopf (Xenopus laevis) homolog 1; dickkopf-related protein 1; DKK 1; SK; hDkk-1; dickkopf-1 like; dickkopf related protein-1; DKK-1;

**Gene ID** [22943](#)

**mRNA Refseq** [NM\\_012242](#)

**Protein Refseq** [NP\\_036374](#)

**MIM** [605189](#)

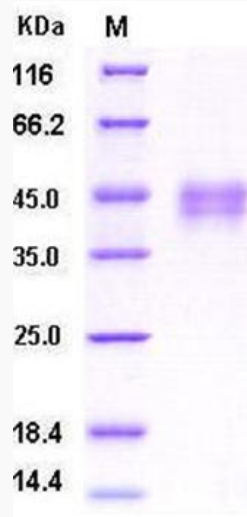
**UniProt ID** [O94907](#)

 Tel: 1-631-559-9269 1-516-512-3133

 Email: [info@creative-biomart.com](mailto:info@creative-biomart.com)  Fax: 1-631-938-8127

 45-1 Ramsey Road, Shirley, NY 11967, USA

**SDS-PAGE**



 Tel: 1-631-559-9269 1-516-512-3133

 Email: [info@creative-biomart.com](mailto:info@creative-biomart.com)  Fax: 1-631-938-8127

 45-1 Ramsey Road, Shirley, NY 11967, USA