

Recombinant Human DKK1 Protein, His-tagged

Cat. No. DKK1-894H Lot. No. (See product label)

SPECIFICATION

Product Overview	Recombinant Human DKK1 Protein (Leu33-His266) with His tag was expressed in CHO.
Species	Human
Source	CHO
ProteinLength	Leu33-His266
Description	<p>This gene encodes a member of the dickkopf family of proteins. Members of this family are secreted proteins characterized by two cysteine-rich domains that mediate protein-protein interactions. The encoded protein binds to the LRP6 co-receptor and inhibits beta-catenin-dependent Wnt signaling. This gene plays a role in embryonic development and may be important in bone formation in adults. Elevated expression of this gene has been observed in numerous human cancers and this protein may promote proliferation, invasion and growth in cancer cell lines.</p>
Form	Freeze-dried powder
Molecular Mass	Predicted Molecular Mass: 27.2 kDa; Accurate Molecular Mass: 34-44 kDa
Purity	> 95%
Applications	Positive Control; Immunogen; SDS-PAGE; WB.

 Tel: 1-631-559-9269 1-516-512-3133

 Email: info@creative-biomart.com  Fax: 1-631-938-8127

 45-1 Ramsey Road, Shirley, NY 11967, USA

Stability	The thermal stability is described by the loss rate. The loss rate was determined by accelerated thermal degradation test, that is, incubate the protein at 37 centigrade for 48h, and no obvious degradation and precipitation were observed. The loss rate is less than 5% within the expiration date under appropriate storage condition.
Storage	Avoid repeated freeze/thaw cycles. Store at 2-8 centigrade for one month. Aliquot and store at -80 centigrade for 12 months.
Storage Buffer	PBS, pH7.4, containing 0.01% SKL, 1mM DTT, 5% Trehalose and Proclin300.
Reconstitution	Reconstitute in 10mM PBS (pH7.4) to a concentration of 0.1-1.0 mg/mL. Do not vortex.

GENE INFORMATION

Gene Name	DKK1 dickkopf 1 homolog (<i>Xenopus laevis</i>) [<i>Homo sapiens</i> (human)]
Official Symbol	DKK1
Synonyms	DKK1; dickkopf 1 homolog (<i>Xenopus laevis</i>); dickkopf (<i>Xenopus laevis</i>) homolog 1; dickkopf-related protein 1; DKK 1; SK; hDkk-1; dickkopf-1 like; dickkopf related protein-1; DKK-1;
Gene ID	22943
mRNA Refseq	NM_012242
Protein Refseq	NP_036374
MIM	605189

 Tel: 1-631-559-9269 1-516-512-3133

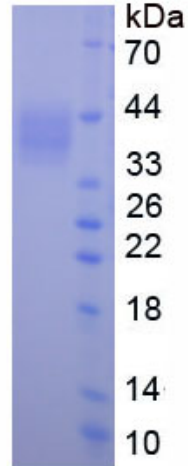
 Email: info@creative-biomart.com  Fax: 1-631-938-8127

 45-1 Ramsey Road, Shirley, NY 11967, USA



UniProt ID

O94907



Tel: 1-631-559-9269 1-516-512-3133

Email: info@creative-biomart.com Fax: 1-631-938-8127

45-1 Ramsey Road, Shirley, NY 11967, USA