

Recombinant Human DKK2 Protein, His-tagged

Cat. No. DKK2-2665H **Lot. No.** (See product label)

SPECIFICATION

Product Overview	Human DKK2 (NP_055236, 34 a.a. - 259 a.a.) partial recombinant protein with His tag expressed in Escherichia coli.
Species	Human
Source	E.coli
ProteinLength	34-259 a.a.
Description	This gene encodes a protein that is a member of the dickkopf family. The secreted protein contains two cysteine rich regions and is involved in embryonic development through its interactions with the Wnt signaling pathway. It can act as either an agonist or antagonist of Wnt/beta-catenin signaling, depending on the cellular context and the presence of the co-factor kremen 2. Activity of this protein is also modulated by binding to the Wnt co-receptor LDL-receptor related protein 6 (LRP6). [provided by RefSeq, Jul 2008]
Form	Liquid
Molecular Mass	27.6 kDa
AA Sequence	MGSSHHHHHSSGLVPRGSHMGSMLNSIKSSLGGETPGQAANRSAGMYQGLAF GGSKKGKNLGQAYPCSSDKECEVGRYCHSPHQSSACMVCRRKKKRCHRDGMC CPSTRCNNGICIPVTESILTPHIPALDGTRHRDRNHGHYSNHDLGWQNLGRPHTKM SHIKGHEGDPCLRSSDCIEGFCCARHFWTKICKPVLHQGEVCTKQRKKGSHGLEIFQ

 Tel: 1-631-559-9269 1-516-512-3133

 Email: info@creative-biomart.com  Fax: 1-631-938-8127

 45-1 Ramsey Road, Shirley, NY 11967, USA

RCDCAKGLSCKVWKDATYSSKARLHVCQKI

Purity > 90% by SDS - PAGE

Applications SDS-PAGE

Storage Store at -20 centigrade. For long term storage store at -80 centigrade. Aliquot to avoid repeated freezing and thawing.

Storage Buffer In 20mM Tris-HCl buffer, pH 8.0 (0.4M Urea, 10% glycerol).

GENE INFORMATION

Gene Name [DKK2 dickkopf 2 homolog \(Xenopus laevis\) \[Homo sapiens \]](#)

Official Symbol [DKK2](#)

Synonyms DKK2; dickkopf 2 homolog (Xenopus laevis); dickkopf (Xenopus laevis) homolog 2; dickkopf-related protein 2; hDkk-2; dickkopf-2; dickkopf homolog 2; dickkopf related protein-2; DKK-2;

Gene ID [27123](#)

mRNA Refseq [NM_014421](#)

Protein Refseq [NP_055236](#)

MIM [605415](#)

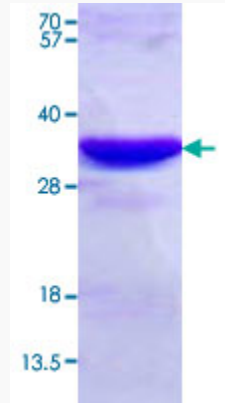
UniProt ID [Q9UBU2](#)

 Tel: 1-631-559-9269 1-516-512-3133

 Email: info@creative-biomart.com  Fax: 1-631-938-8127

 45-1 Ramsey Road, Shirley, NY 11967, USA

**Quality Control
Testing**



3 µg/lane in 15% SDS-PAGE Stained with Coomassie Blue. Due to the protein nature, dimmers and multimers may be observed.

 Tel: 1-631-559-9269 1-516-512-3133

 Email: info@creative-biomart.com  Fax: 1-631-938-8127

 45-1 Ramsey Road, Shirley, NY 11967, USA