

Recombinant Human DKKL1 Protein, GST-tagged

Cat. No. DKKL1-2669H Lot. No. (See product label)

SPECIFICATION

Product Overview	Human DKKL1 full-length ORF (NP_055234.1, 1 a.a. - 242 a.a.) recombinant protein with GST-tag at N-terminal.
Species	Human
Source	Wheat Germ
Description	The dickkopf protein family interacts with the Wnt signaling pathway and its members are characterized by two conserved cysteine-rich domains. This gene encodes a secreted protein that has low sequence similarity to the dickkopf-3 protein. Multiple alternatively spliced transcript variants encoding distinct isoforms have been found for this gene. [provided by RefSeq, Oct 2010]
Molecular Mass	53.4 kDa
AA Sequence	MGEASPPAPARRHLLVLLLLSTLVIPSAAAPIHDADAQESSLGLTGLQSLQGF SRL FLKGNLLRGIDSLFSAPMDFRGLPGNYHKEENQEHLGNNTLSSH LQIDKMTDNKT GEVLISENVVASIQPAEGSFEGDLKVPRMEEKEALVPIQKATDSFHTELHPRVAFWII KLPRRRSHQDALEGGHWLSEKRHRLQAIRDGLRKGTHKDVLEEGTESSSHSRLSP RKTHLLYILRPSRQL
Applications	Enzyme-linked Immunoabsorbent Assay Western Blot (Recombinant protein) Antibody Production Protein Array

 Tel: 1-631-559-9269 1-516-512-3133

 Email: info@creative-biomart.com  Fax: 1-631-938-8127

 45-1 Ramsey Road, Shirley, NY 11967, USA

Notes	Best use within three months from the date of receipt of this protein.
Storage	Store at -80 centigrade. Aliquot to avoid repeated freezing and thawing.
Storage Buffer	50 mM Tris-HCl, 10 mM reduced Glutathione, pH=8.0 in the elution buffer.

GENE INFORMATION

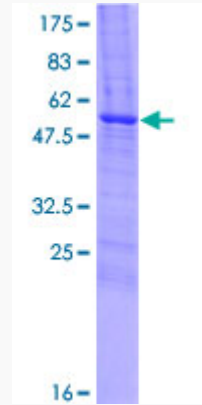
Gene Name	DKKL1 dickkopf-like 1 [Homo sapiens]
Official Symbol	DKKL1
Synonyms	DKKL1; dickkopf-like 1; dickkopf like 1 (soggy); dickkopf-like protein 1; cancer/testis antigen 34; CT34; SGY 1; soggy; soggy-1; protein soggy-1; SGY; SGY1; SGY-1;
Gene ID	27120
mRNA Refseq	NM_001197301
Protein Refseq	NP_001184230
MIM	605418
UniProt ID	Q9UK85

 Tel: 1-631-559-9269 1-516-512-3133

 Email: info@creative-biomart.com  Fax: 1-631-938-8127

 45-1 Ramsey Road, Shirley, NY 11967, USA

**Quality Control
Testing**



12.5% SDS-PAGE Stained with Coomassie Blue.

 Tel: 1-631-559-9269 1-516-512-3133

 Email: info@creative-biomart.com  Fax: 1-631-938-8127

 45-1 Ramsey Road, Shirley, NY 11967, USA