

Recombinant Human DLGAP1 Protein, GST-tagged

Cat. No. DLGAP1-2680H Lot. No. (See product label)

SPECIFICATION

Product Overview	Human DLGAP1 partial ORF (NP_004737.2, 1 a.a. - 100 a.a.) recombinant protein with GST-tag at N-terminal.
Species	Human
Source	Wheat Germ
Description	DLGAP1 (DLG Associated Protein 1) is a Protein Coding gene. Diseases associated with DLGAP1 include Retinitis Pigmentosa 55 and Obsessive-Compulsive Disorder. Among its related pathways are Protein-protein interactions at synapses and Neuroscience. An important paralog of this gene is DLGAP2.
Molecular Mass	36.74 kDa
AA Sequence	MKGLSGSRSHHHGVTCDSDSLSHHSDRKPYPYLLSPVEHHPADHPYYTQRNSFQA ECVGPFSDDLASSTFPRRHYSQQELKDECALVPRTLATKANRIP
Applications	Enzyme-linked Immunoabsorbent Assay Western Blot (Recombinant protein) Antibody Production Protein Array
Notes	Best use within three months from the date of receipt of this protein.
Storage	Store at -80 centigrade. Aliquot to avoid repeated freezing and thawing.

 Tel: 1-631-559-9269 1-516-512-3133

 Email: info@creative-biomart.com  Fax: 1-631-938-8127

 45-1 Ramsey Road, Shirley, NY 11967, USA

Storage Buffer 50 mM Tris-HCl, 10 mM reduced Glutathione, pH=8.0 in the elution buffer.

GENE INFORMATION

Gene Name [DLGAP1 discs, large \(Drosophila\) homolog-associated protein 1 \[Homo sapiens \]](#)

Official Symbol [DLGAP1](#)

Synonyms DLGAP1; discs, large (Drosophila) homolog-associated protein 1; discs, large (Drosophila) homolog associated protein 1; disks large-associated protein 1; DAP 1; GKAP; SAPAP1; PSD-95/SAP90 binding protein 1; SAP90/PSD-95-associated protein 1; guanylate kinase-associated protein; DAP-1; hGKAP; DAP-1-BETA; DAP-1-ALPHA; FLJ38442; MGC88156;

Gene ID [9229](#)

mRNA Refseq [NM_001003809](#)

Protein Refseq [NP_001003809](#)

MIM [605445](#)

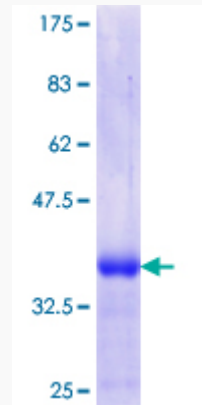
UniProt ID [O14490](#)

 Tel: 1-631-559-9269 1-516-512-3133

 Email: info@creative-biomart.com  Fax: 1-631-938-8127

 45-1 Ramsey Road, Shirley, NY 11967, USA

**Quality Control
Testing**



12.5% SDS-PAGE Stained with Coomassie Blue.

 Tel: 1-631-559-9269 1-516-512-3133

 Email: info@creative-biomart.com  Fax: 1-631-938-8127

 45-1 Ramsey Road, Shirley, NY 11967, USA