

Recombinant Human DLK1 Protein, His&GST-tagged

Cat. No. DLK1-1347H Lot. No. (See product label)

SPECIFICATION

Product Overview	Recombinant Human DLK1 Protein (Ser206-Pro366) with N-His&GST tag was expressed in E. coli.
Species	Human
Source	E.coli
ProteinLength	Ser206-Pro366
Description	This gene encodes a transmembrane protein that contains multiple epidermal growth factor repeats that functions as a regulator of cell growth. The encoded protein is involved in the differentiation of several cell types including adipocytes. This gene is located in a region of chromosome 14 frequently showing unparental disomy, and is imprinted and expressed from the paternal allele. A single nucleotide variant in this gene is associated with child and adolescent obesity and shows polar overdominance, where heterozygotes carrying an active paternal allele express the phenotype, while mutant homozygotes are normal.
Form	Freeze-dried powder
Molecular Mass	Predicted Molecular Mass: 47.8 kDa Accurate Molecular Mass: 48 kDa
Purity	> 90%

 Tel: 1-631-559-9269 1-516-512-3133

 Email: info@creative-biomart.com  Fax: 1-631-938-8127

 45-1 Ramsey Road, Shirley, NY 11967, USA

Applications	Positive Control; Immunogen; SDS-PAGE; WB.
Stability	The thermal stability is described by the loss rate. The loss rate was determined by accelerated thermal degradation test, that is, incubate the protein at 37 centigrade for 48h, and no obvious degradation and precipitation were observed. The loss rate is less than 5% within the expiration date under appropriate storage condition.
Storage	Avoid repeated freeze/thaw cycles. Store at 2-8 centigrade for one month. Aliquot and store at -80 centigrade for 12 months.
Storage Buffer	20mM Tris, 150mM NaCl, pH8.0, containing 1mM EDTA, 1mM DTT, 0.01% SKL, 5% Trehalose and Proclin300.
Reconstitution	Reconstitute in 20mM Tris, 150mM NaCl (pH8.0) to a concentration of 0.1-1.0 mg/mL. Do not vortex.

GENE INFORMATION

Gene Name	DLK1 delta-like 1 homolog (Drosophila) [Homo sapiens (human)]
Official Symbol	DLK1
Synonyms	DLK1; delta-like 1 homolog (Drosophila); delta like homolog (Drosophila); protein delta homolog 1; Delta1; FA1; pG2; Pref 1; ZOG; DLK-1; secredeltin; fetal antigen 1; preadipocyte factor 1; DLK; PREF1; Pref-1;
Gene ID	8788
mRNA Refseq	NM_003836
Protein Refseq	NP_003827

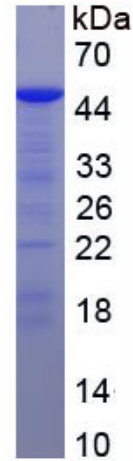
 Tel: 1-631-559-9269 1-516-512-3133

 Email: info@creative-biomart.com  Fax: 1-631-938-8127

 45-1 Ramsey Road, Shirley, NY 11967, USA

MIM 176290

UniProt ID P80370



 Tel: 1-631-559-9269 1-516-512-3133

 Email: info@creative-biomart.com  Fax: 1-631-938-8127

 45-1 Ramsey Road, Shirley, NY 11967, USA