

Recombinant Human DLK1 protein, His-tagged

Cat. No. DLK1-1839H Lot. No. (See product label)

SPECIFICATION

Product Overview	Recombinant Human DLK1 aa. (Asn177~Phe326 (Accession # P80370)) fused with N-terminal His tag was produced in E. coli cells.
Species	Human
Source	E.coli
ProteinLength	Asn177~Phe326
Description	<p>This gene encodes a transmembrane protein that contains multiple epidermal growth factor repeats that functions as a regulator of cell growth. The encoded protein is involved in the differentiation of several cell types including adipocytes. This gene is located in a region of chromosome 14 frequently showing unparental disomy, and is imprinted and expressed from the paternal allele. A single nucleotide variant in this gene is associated with child and adolescent obesity and shows polar overdominance, where heterozygotes carrying an active paternal allele express the phenotype, while mutant homozygotes are normal.</p>
Form	Freeze-dried powder
Molecular Mass	19kDa as determined by SDS-PAGE reducing conditions.
Endotoxin	<1.0EU per 1ug (determined by the LAL method)
Purity	>95%

 Tel: 1-631-559-9269 1-516-512-3133

 Email: info@creative-biomart.com  Fax: 1-631-938-8127

 45-1 Ramsey Road, Shirley, NY 11967, USA

Applications	SDS-PAGE; WB; ELISA; IP.
Stability	The thermal stability is described by the loss rate. The loss rate was determined by accelerated thermal degradation test, that is, incubate the protein at 37°C for 48h, and no obvious degradation and precipitation were observed. The loss rate is less than 5% within the expiration date under appropriate storage condition.
Storage	Avoid repeated freeze/thaw cycles. Store at 2-8°C for one month. Aliquot and store at -80°C for 12 months.
Storage buffer	Supplied as lyophilized form in PBS, pH 7.4, containing 5% sucrose, 0.01% sarcosyl.
Reconstitution	Reconstitute in sterile PBS, pH7.2-pH7.4.
Isoelectric Point	8.3

GENE INFORMATION

Gene Name	DLK1 delta like non-canonical Notch ligand 1 [Homo sapiens (human)]
Official Symbol	DLK1
Synonyms	DLK1; delta like non-canonical Notch ligand 1; DLK; FA1; ZOG; pG2; DLK-1; PREF1; Delta1; Pref-1; protein delta homolog 1; delta-like 1 homolog; fetal antigen 1; preadipocyte factor 1; secredelin
Gene ID	8788
mRNA Refseq	NM_001317172.1
Protein Refseq	NP_001304101.1

 Tel: 1-631-559-9269 1-516-512-3133

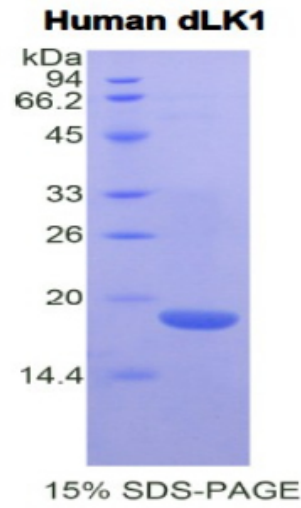
 Email: info@creative-biomart.com  Fax: 1-631-938-8127

 45-1 Ramsey Road, Shirley, NY 11967, USA

UniProt ID

P80370

SDS-PAGE



 Tel: 1-631-559-9269 1-516-512-3133

 Email: info@creative-biomart.com  Fax: 1-631-938-8127

 45-1 Ramsey Road, Shirley, NY 11967, USA