

Recombinant Human DLK1 Protein (Ala24-Pro297), C-His tagged

Cat. No. DLK1-2262H Lot. No. (See product label)

SPECIFICATION

Product Overview	Recombinant human DLK1 (Ala24-Pro297) fused with C-terminal His tag was expressed in Mammalian cells.
Species	Human
Source	Mammalian Cells
ProteinLength	Ala24-Pro297
Form	Lyophilized powder/frozen liquid
Molecular Mass	30.14 kDa
Purity	>90% as determined by SDS-PAGE
Notes	For research use only.
Storage	Use a manual defrost freezer and avoid repeated freeze thaw cycles. Store at 2 to 8 centigrade for one week. Store at -20 to -80 centigrade for twelve months from the date of receipt.
Storage Buffer	Supplied as solution form in PBS or lyophilized from PBS.
Reconstitution	Reconstitute in sterile water for a stock solution.

 Tel: 1-631-559-9269 1-516-512-3133

 Email: info@creative-biomart.com  Fax: 1-631-938-8127

 45-1 Ramsey Road, Shirley, NY 11967, USA

Shipping They are shipped out with dry ice/blue ice unless customers require otherwise.

GENE INFORMATION

Gene Name DLK1 delta-like 1 homolog (Drosophila) [Homo sapiens (human)]

Official Symbol DLK1

Synonyms DLK1; delta-like 1 homolog (Drosophila); delta like homolog (Drosophila); protein delta homolog 1; Delta1; FA1; pG2; Pref 1; ZOG; DLK-1; secredeltin; fetal antigen 1; preadipocyte factor 1; DLK; PREF1; Pref-1;

Gene ID 8788

mRNA Refseq NM_003836

Protein Refseq NP_003827

MIM 176290

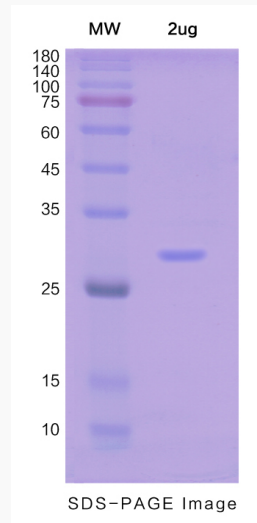
UniProt ID P80370

 Tel: 1-631-559-9269 1-516-512-3133

 Email: info@creative-biomart.com  Fax: 1-631-938-8127

 45-1 Ramsey Road, Shirley, NY 11967, USA

SDS-PAGE



 Tel: 1-631-559-9269 1-516-512-3133

 Email: info@creative-biomart.com  Fax: 1-631-938-8127

 45-1 Ramsey Road, Shirley, NY 11967, USA