

Recombinant Human DLK1 Protein, Myc/DDK-tagged, C13 and N15-labeled

Cat. No. DLK1-3124H **Lot. No.** (See product label)

SPECIFICATION

Product Overview	DLK1 MS Standard C13 and N15-labeled recombinant protein (NP_003827) with a C-terminal MYC/DDK tag, was expressed in HEK293 cells.
Species	Human
Source	HEK293
Description	This gene encodes a transmembrane protein that contains multiple epidermal growth factor repeats that functions as a regulator of cell growth. The encoded protein is involved in the differentiation of several cell types including adipocytes. This gene is located in a region of chromosome 14 frequently showing unparental disomy, and is imprinted and expressed from the paternal allele. A single nucleotide variant in this gene is associated with child and adolescent obesity and shows polar overdominance, where heterozygotes carrying an active paternal allele express the phenotype, while mutant homozygotes are normal.
Molecular Mass	41.2 kDa
AA Sequence	MTATEALLRVLLLLLAFGHSTYGAECFPACNPQNGFCEDDNVCRCQPGWQGPLCD QCVTSPGCLHGLCGEPGQCICTDGWDGELCDRDVACSSAPCANNGTCSLDDG LYECSCAPGYSGKDCQKKGPCVINGSPCQHGGTCVDDEGRASHASCLCPPGFS GNFCEIVANSCTPNPCENDGVCTDIGGDFRCRCPAGFIDKTCRSPVTNCASSPCQN GGTCLQHTQVSYECLCKPEFTGLTCVKKRALSPQQVTRLPNGYGLAYRLTPGVHEL

 Tel: 1-631-559-9269 1-516-512-3133

 Email: info@creative-biomart.com  Fax: 1-631-938-8127

 45-1 Ramsey Road, Shirley, NY 11967, USA

PVQQPEHRILKVSMEKLNKKTPLLTEGQAICFTILGVLTSLVVLGTVGIVFLNKCETWV
 SNLRYNHMLRKKKNLLLQYNSGEDLAVNIIFPEKIDMTTFSKEAGDEEITRTRPLEQK
 LISEEDLAANDILDYKDDDDKV

Purity > 80% as determined by SDS-PAGE and Coomassie blue staining

Stability Stable for 3 months from receipt of products under proper storage and handling conditions.

Storage Store at -80 centigrade. Avoid repeated freeze-thaw cycles.

Concentration 50 µg/mL as determined by BCA

Storage Buffer 100 mM glycine, 25 mM Tris-HCl, pH 7.3.

GENE INFORMATION

Gene Name [DLK1 delta like non-canonical Notch ligand 1 \[Homo sapiens \(human\) \]](#)

Official Symbol [DLK1](#)

Synonyms DLK1; delta-like 1 homolog (Drosophila); delta like homolog (Drosophila); protein delta homolog 1; Delta1; FA1; pG2; Pref 1; ZOG; DLK-1; secredelin; fetal antigen 1; preadipocyte factor 1; DLK; PEF1; Pref-1;

Gene ID [8788](#)

mRNA Refseq [NM_003836](#)

Protein Refseq [NP_003827](#)

 Tel: 1-631-559-9269 1-516-512-3133

 Email: info@creative-biomart.com  Fax: 1-631-938-8127

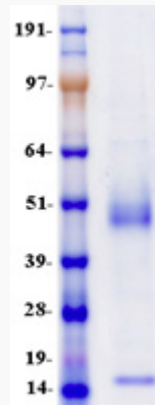
 45-1 Ramsey Road, Shirley, NY 11967, USA



MIM 176290

UniProt ID P80370

SDS-PAGE



Tel: 1-631-559-9269 1-516-512-3133

Email: info@creative-biomart.com Fax: 1-631-938-8127

45-1 Ramsey Road, Shirley, NY 11967, USA