

Active Recombinant Human DLK1 protein, hFc-tagged

Cat. No. DLK1-583H Lot. No. (See product label)

SPECIFICATION

Product Overview	Recombinant Human DLK1 protein(P80370)(Ala24-Gln303), fused with hFc tag, was expressed in HEK293.
Species	Human
Source	HEK293
ProteinLength	Ala24-Gln303
Form	Lyophilized from 0.22 µm filtered solution in PBS, pH7.4.
Bio-activity	When Recombinant Human DLK1 /hFC Protein is immobilized at 2g/mL (100 µ/well), the concentration of Anti Human DLK1 antibody(18A5) that produces 50% of the optimal binding response is approximately 30 ng/ml.
Molecular Mass	The protein has a calculated MW of 54kDa.The reducing (R) heterodimer protein migrates as 60-80 kDa due to glycosylation
Endotoxin	<1EU/mg
Purity	SDS-PAGE>95%SEC>90%
Storage	Store at -20°C.
Reconstitution	sterile H400

 Tel: 1-631-559-9269 1-516-512-3133

 Email: info@creative-biomart.com  Fax: 1-631-938-8127

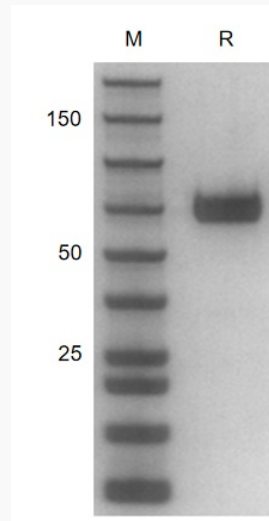
 45-1 Ramsey Road, Shirley, NY 11967, USA

GENE INFORMATION

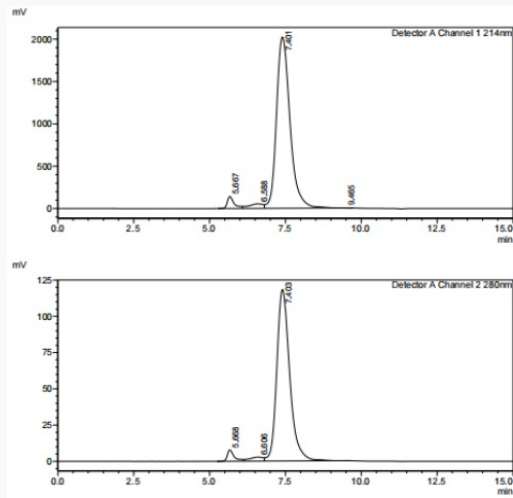
Gene Name	DLK1 delta-like 1 homolog (Drosophila) [Homo sapiens]
Official Symbol	DLK1
Synonyms	DLK1; delta-like 1 homolog (Drosophila); delta like homolog (Drosophila); protein delta homolog 1; Delta1; FA1; pG2; Pref 1; ZOG; DLK-1; secredelin; fetal antigen 1; preadipocyte factor 1; DLK; PREF1; Pref-1;
Gene ID	8788
mRNA Refseq	NM_003836
Protein Refseq	NP_003827
MIM	176290
UniProt ID	P80370

 Tel: 1-631-559-9269 1-516-512-3133 Email: info@creative-biomart.com  Fax: 1-631-938-8127 45-1 Ramsey Road, Shirley, NY 11967, USA

SDS-PAGE



SDS-HPLC



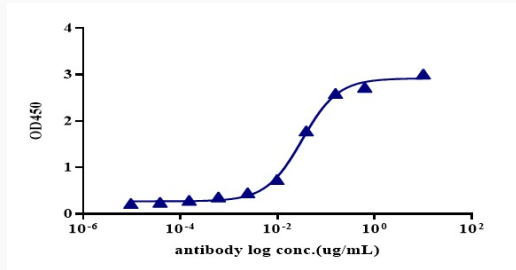
 Tel: 1-631-559-9269 1-516-512-3133

 Email: info@creative-biomart.com  Fax: 1-631-938-8127

 45-1 Ramsey Road, Shirley, NY 11967, USA



ELISA



Tel: 1-631-559-9269 1-516-512-3133

Email: info@creative-biomart.com Fax: 1-631-938-8127

45-1 Ramsey Road, Shirley, NY 11967, USA