

Recombinant Human DLK2 Protein (27-306 aa), His-tagged

Cat. No. DLK2-1676H Lot. No. (See product label)

SPECIFICATION

Product Overview	Recombinant Human DLK2 Protein (27-306 aa) is produced by Yeast expression system. This protein is fused with a 6xHis tag at the N-terminal. Research Area: Signal Transduction. Protein Description: Partial.
Species	Human
Source	Yeast
ProteinLength	27-306 aa
Description	Regulates adipogenesis.
Form	Tris-based buffer, 50% glycerol
Molecular Mass	31.8 kDa
AA Sequence	DDCSSHCDLAHGCCAPDGSCRCDPGWEGLHCERCVRMPGCQHGTCHQPWQCIC HSGWAGKFCDKDEHICTTQSPCQNGGQCMYDGGGEYHCVCLPGFHFGRDCERKA GPCEQAGSPCRNGGQCQDDQGFALNFTCRCLVGFVGARCEVNVDDCLMRPCAN GATCLDGINRFSCLCEPAGRFCTINLDDCASRPCQRGARCRDRVHDFDCLCPSG YGGKTCELVLPVPDPPTTVDTPLGPTSAVVVVPATGPAPHSAGAGLLRISVKEVRRQ EAGLGEPS
Purity	> 90% as determined by SDS-PAGE.

 Tel: 1-631-559-9269 1-516-512-3133

 Email: info@creative-biomart.com  Fax: 1-631-938-8127

 45-1 Ramsey Road, Shirley, NY 11967, USA

Notes	Repeated freezing and thawing is not recommended. Store working aliquots at 4 centigrade for up to one week.
Storage	The shelf life is related to many factors, storage state, buffer ingredients, storage temperature and the stability of the protein itself. Generally, the shelf life of liquid form is 6 months at -20 centigrade/-80 centigrade. The shelf life of lyophilized form is 12 months at -20 centigrade/-80 centigrade.
Concentration	A hardcopy of COA with reconstitution instruction is sent along with the products.

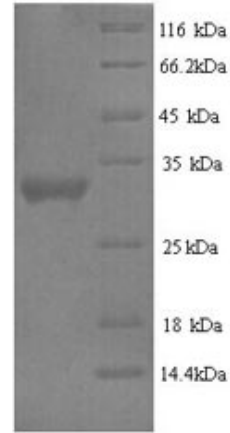
GENE INFORMATION

Gene Name	DLK2 delta-like 2 homolog (Drosophila) [Homo sapiens]
Official Symbol	DLK2
Synonyms	DLK2; MGC2487; DLK-2; EGF-like protein 9; EGFL9; MGC111055;
Gene ID	65989
mRNA Refseq	NM_023932
Protein Refseq	NP_076421
UniProt ID	Q6UY11

 Tel: 1-631-559-9269 1-516-512-3133

 Email: info@creative-biomart.com  Fax: 1-631-938-8127

 45-1 Ramsey Road, Shirley, NY 11967, USA



(Tris-Glycine gel) Discontinuous SDS-PAGE (reduced) with 5% enrichment gel and 15% separation gel.

Tel: 1-631-559-9269 1-516-512-3133

Email: info@creative-biomart.com Fax: 1-631-938-8127

45-1 Ramsey Road, Shirley, NY 11967, USA