

Recombinant Mouse DLK2 Protein (27-305 aa), His-tagged

Cat. No. DLK2-2334M Lot. No. (See product label)

SPECIFICATION

Product Overview	Recombinant Mouse DLK2 Protein (27-305 aa) is produced by Yeast expression system. This protein is fused with a 6xHis tag at the N-terminal. Research Area: Signal Transduction. Protein Description: Partial.
Species	Mouse
Source	Yeast
ProteinLength	27-305 aa
Description	Regulates adipogenesis.
Form	Tris-based buffer,50% glycerol
Molecular Mass	31.6 kDa
AA Sequence	DDCSSHCDLAHGCCAPDGSCRCDPGWEGLHCERCVRMPGCQHGTCHQPWQCIC HSGWAGKFCDEHICTSQSPCQNGGQCVYDGGGEYHCVCLPGFHGRGKERKA GPCEQAGFPCRNGGQCQDNQGFALNFTCRCLAGFMGAHCEVNVDDCLMRPCAN GATCIDGINRFSLCPEGFAGRFCTINLDDCASRPCQRGARCRDRVHDFDCLCPSG YGGKTCELVLPAPEPASVGTQMPTSAVVVPATGPAPHSAGALLRISVKEVRRQ ESGLGESS
Purity	> 90% as determined by SDS-PAGE.

 Tel: 1-631-559-9269 1-516-512-3133

 Email: info@creative-biomart.com  Fax: 1-631-938-8127

 45-1 Ramsey Road, Shirley, NY 11967, USA

Notes	Repeated freezing and thawing is not recommended. Store working aliquots at 4 centigrade for up to one week.
Storage	The shelf life is related to many factors, storage state, buffer ingredients, storage temperature and the stability of the protein itself. Generally, the shelf life of liquid form is 6 months at -20 centigrade/-80 centigrade. The shelf life of lyophilized form is 12 months at -20 centigrade/-80 centigrade.
Concentration	A hardcopy of COA will be sent along with the products. Please refer to it for detailed information.

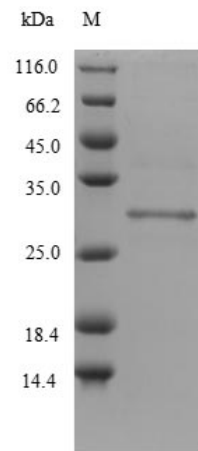
GENE INFORMATION

Gene Name	DLK2 delta-like 2 homolog (Drosophila) [Mus musculus]
Official Symbol	DLK2
Synonyms	DLK2; DLK-2; EGF-like protein 9; Egfl9; AI413481;
Gene ID	106565
mRNA Refseq	NM_207666
Protein Refseq	NP_997549
UniProt ID	Q8K1E3

 Tel: 1-631-559-9269 1-516-512-3133

 Email: info@creative-biomart.com  Fax: 1-631-938-8127

 45-1 Ramsey Road, Shirley, NY 11967, USA



(Tris-Glycine gel) Discontinuous SDS-PAGE (reduced) with 5% enrichment gel and 15% separation gel.

 Tel: 1-631-559-9269 1-516-512-3133

 Email: info@creative-biomart.com  Fax: 1-631-938-8127

 45-1 Ramsey Road, Shirley, NY 11967, USA