

Recombinant Human DLK2 Protein, GST-tagged

Cat. No. DLK2-2684H Lot. No. (See product label)

SPECIFICATION

Product Overview	Human DLK2 full-length ORF (NP_076421.2, 1 a.a. - 383 a.a.) recombinant protein with GST-tag at N-terminal.
Species	Human
Source	Wheat Germ
Description	DLK2 (Delta Like Non-Canonical Notch Ligand 2) is a Protein Coding gene. Among its related pathways are Canonical and Non-canonical Notch signaling and P38 MAPK Signaling Pathway (sino). GO annotations related to this gene include calcium ion binding and protein heterodimerization activity. An important paralog of this gene is DLK1.
Molecular Mass	66.9 kDa
AA Sequence	MPSGCRCLHLVCLLCILGAPGQPVRADDCSSHCDLAHGCCAPDGSCRCDPGWEGL HCERCVRMPGCQHGTCHQPWQCICHSGWAGKFCDKDEHICTTQSPCQNGGQCM YDGGGEYHCVCLPGFHGRDCERKAGPCEQAGSPCRNGGQCQDDQGFALNFTCR CLVGFVGARCEVNVDDCLMRPCANGATCLDGINRFSCLCPEGFAGRFCTINLDDCA SRPCQRGARCRDRVHDFDCLCPSGYGGKTCELVLPVPDPPTTVDTPLGPTSASVVV PATGPAPHSAGAGLLRISVKEVRRQEAGLGESLVALVVFALTAALVLATVLLTLR AWRRGVCPPGPCCYPAPHYAPACQDQECQVSMLPAGLPLPRDLPPPEPGKTTAL
Applications	Enzyme-linked Immunoabsorbent Assay Western Blot (Recombinant protein)

 Tel: 1-631-559-9269 1-516-512-3133

 Email: info@creative-biomart.com  Fax: 1-631-938-8127

 45-1 Ramsey Road, Shirley, NY 11967, USA

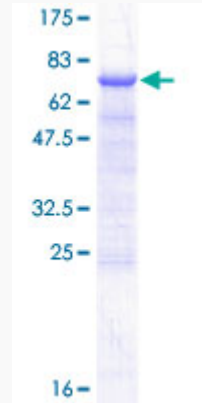
	Antibody Production Protein Array
Notes	Best use within three months from the date of receipt of this protein.
Storage	Store at -80 centigrade. Aliquot to avoid repeated freezing and thawing.
Storage Buffer	50 mM Tris-HCl, 10 mM reduced Glutathione, pH=8.0 in the elution buffer.
GENE INFORMATION	
Gene Name	DLK2 delta-like 2 homolog (Drosophila) [Homo sapiens]
Official Symbol	DLK2
Synonyms	DLK2; delta-like 2 homolog (Drosophila); EGF like domain, multiple 9 , EGFL9; protein delta homolog 2; MGC2487; DLK-2; EGF-like protein 9; EGF-like-domain, multiple 9; epidermal growth factor-like protein 9; EGFL9; MGC111055;
Gene ID	65989
mRNA Refseq	NM_023932
Protein Refseq	NP_076421
UniProt ID	Q6UY11

 Tel: 1-631-559-9269 1-516-512-3133

 Email: info@creative-biomart.com  Fax: 1-631-938-8127

 45-1 Ramsey Road, Shirley, NY 11967, USA

**Quality Control
Testing**



12.5% SDS-PAGE Stained with Coomassie Blue.

 Tel: 1-631-559-9269 1-516-512-3133

 Email: info@creative-biomart.com  Fax: 1-631-938-8127

 45-1 Ramsey Road, Shirley, NY 11967, USA