

Recombinant Human DLL1 Protein, GST-tagged

Cat. No. DLL1-2686H **Lot. No.** (See product label)

SPECIFICATION

Product Overview	Human DLL1 partial ORF (NP_005609, 18 a.a. - 109 a.a.) recombinant protein with GST-tag at N-terminal.
Species	Human
Source	Wheat Germ
Description	DLL1 is a human homolog of the Notch Delta ligand and is a member of the delta/serrate/jagged family. It plays a role in mediating cell fate decisions during hematopoiesis. It may play a role in cell-to-cell communication. [provided by RefSeq, Jul 2008]
Molecular Mass	35.86 kDa
AA Sequence	QVWSSGVFELKLQEFVNKKGLLGNRNCCRGGAGPPPCACRTFFRVCLKHYQASVS PEPPCTYGSVAVTPVLGVDSFSLPDGGGADSAFSNPIR
Applications	Enzyme-linked Immunoabsorbent Assay Western Blot (Recombinant protein) Antibody Production Protein Array
Notes	Best use within three months from the date of receipt of this protein.
Storage	Store at -80 centigrade. Aliquot to avoid repeated freezing and thawing.

 Tel: 1-631-559-9269 1-516-512-3133

 Email: info@creative-biomart.com  Fax: 1-631-938-8127

 45-1 Ramsey Road, Shirley, NY 11967, USA

Storage Buffer 50 mM Tris-HCl, 10 mM reduced Glutathione, pH=8.0 in the elution buffer.

GENE INFORMATION

Gene Name DLL1 delta-like 1 (Drosophila) [Homo sapiens]

Official Symbol DLL1

Synonyms DLL1; delta-like 1 (Drosophila); delta (Drosophila) like 1; delta-like protein 1; H-Delta-1; drosophila Delta homolog 1; DL1; Delta; DELTA1;

Gene ID 28514

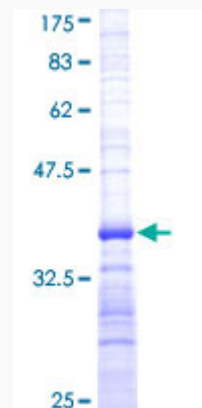
mRNA Refseq NM_005618

Protein Refseq NP_005609

MIM 606582

UniProt ID O00548

Quality Control Testing



 Tel: 1-631-559-9269 1-516-512-3133

 Email: info@creative-biomart.com  Fax: 1-631-938-8127

 45-1 Ramsey Road, Shirley, NY 11967, USA



12.5% SDS-PAGE Stained with Coomassie Blue.

 Tel: 1-631-559-9269 1-516-512-3133

 Email: info@creative-biomart.com  Fax: 1-631-938-8127

 45-1 Ramsey Road, Shirley, NY 11967, USA