

## Active Recombinant Human DLL1 protein, His&Avi-tagged, Biotinylated

Cat. No. DLL1-279H Lot. No. (See product label)

### SPECIFICATION

<b>Product Overview</b>	Biotinylated Active Recombinant Human DLL1 protein(O00548-1)(Gln 18 - Gly 540), fused with a polyhistidine tag at the C-terminus, followed by an Avi tag, was expressed in HEK293.
<b>Species</b>	Human
<b>Source</b>	HEK293
<b>ProteinLength</b>	Gln 18 - Gly 540
<b>Tag</b>	C-His-Avi
<b>Conjugation/Label</b>	Biotin
<b>Form</b>	Lyophilized from 0.22 µm filtered solution in PBS, pH7.4 with trehalose as protectant.
<b>Bio-activity</b>	Immobilized Biotinylated Human DLL1 Protein, His, Avitag, premium grade at 1 µg/mL (100 µL/well) on streptavidin precoated (0.5 µg/well) plate can bind Human NOTCH1, Fc Tag with a linear range of 0.078-1.25 µg/mL.
<b>Molecular Mass</b>	The protein has a calculated MW of 60.1 kDa. The protein migrates as 60-65 kDa under reducing (R) condition (SDS-PAGE) due to glycosylation.
<b>Endotoxin</b>	Less than 0.01 EU per µg by the LAL method.

 Tel: 1-631-559-9269 1-516-512-3133

 Email: [info@creative-biomart.com](mailto:info@creative-biomart.com)  Fax: 1-631-938-8127

 45-1 Ramsey Road, Shirley, NY 11967, USA

<b>Purity</b>	>95% as determined by SDS-PAGE. >90% as determined by SEC-MALS.
<b>Storage</b>	Please avoid repeated freeze-thaw cycles. This product is stable after storage at: The product <b>MUST</b> be stored at -70°C or lower upon receipt; -70°C for 3 months under sterile conditions.
<b>Reconstitution</b>	It is recommended that sterile water be added to the vial to prepare a stock solution of 0.2 ug/ul. Centrifuge the vial at 4°C before opening to recover the entire contents.
<b>Conjugation</b>	Biotin

## GENE INFORMATION

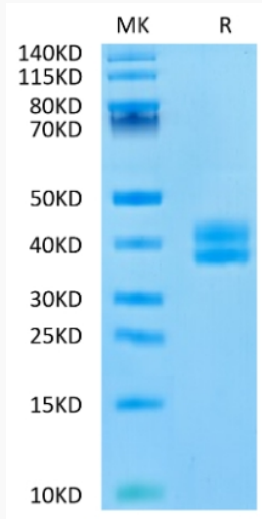
<b>Gene Name</b>	DLL1 delta-like 1 (Drosophila) [ Homo sapiens ]
<b>Official Symbol</b>	DLL1
<b>Synonyms</b>	DLL1; delta-like 1 (Drosophila); delta (Drosophila) like 1; delta-like protein 1; H-Delta-1; drosophila Delta homolog 1; DL1; Delta; DELTA1;
<b>Gene ID</b>	28514
<b>mRNA Refseq</b>	NM_005618
<b>Protein Refseq</b>	NP_005609
<b>MIM</b>	606582
<b>UniProt ID</b>	O00548

 Tel: 1-631-559-9269 1-516-512-3133

 Email: [info@creative-biomart.com](mailto:info@creative-biomart.com)  Fax: 1-631-938-8127

 45-1 Ramsey Road, Shirley, NY 11967, USA

**Bis-Tris PAGE**



 Tel: 1-631-559-9269 1-516-512-3133

 Email: [info@creative-biomart.com](mailto:info@creative-biomart.com)  Fax: 1-631-938-8127

 45-1 Ramsey Road, Shirley, NY 11967, USA