

## Recombinant Chicken DLL1, His-tagged

**Cat. No.** DLL1-6532C    **Lot. No.** (See product label)

### SPECIFICATION

**Product Overview**      Recombinant Chicken DLL1(NP\_990304.2), fused to His-tag, was expressed in HEK293.

**Species**                      Chicken

**Source**                        HEK293

**Form**                         PBS, pH 7.4

**Molecular Mass**          The protein has a calculated MW of 60.5 kDa.

**AA Sequence**

```
MHSSALLCCLVLLTGVRASGVFELKLQEFVNKKGLLSNRNCCRGGGPGGAGQQQC
DCKTFFRVCLKHYQASVSPEPPCTYGSAITPVLGANSFSVPDGAGGADPAFSNPIRF
PFGFTWPGTFLIIEALHTDSPDDLTTENPERLISRLATQRHLAVGEEWSQDLHSSG
RTDLKYSYRFVCDHEHYGEGCSVFCRPRDRFGHFTCGERGEKVCNPGWKGYC
TEPICLPGCDEQHGFCDKPGECKCRVGWQGRYCDECIRYPGCLHGTCQQPWQCN
CQEGWGGLFCNQDLNYCTHHKPKNGATCTNTGQGSYTCSCRPGYTGSSCEIEIN
ECDANPCKNGGSDLENSYSCTCPPGFYGNCELSAMTCADGPCFNNGRCTDN
PDGGYSCRCPLGYSGFNCEKKIDYCSSSPCANGAQCVDLGNSYICQCQAGFTGRH
CDDNVDDCASFPVNGGTCQDGVNDYSCTCPPGYNGKNCSTPVSRCHEHNPCHNG
ATCHERSNRYVCECARGYGGLNCQFLLPEPPQGPVIVDFTEKYTEGQNSQFPHHH
HHHHH
```

**Storage**                      Store it under sterile conditions at -20 to -80°C. It is recommended that the protein be aliquoted for optimal storage. Avoid repeated freeze-thaw cycles.

 Tel: 1-631-559-9269    1-516-512-3133

 Email: [info@creative-biomart.com](mailto:info@creative-biomart.com)     Fax: 1-631-938-8127

 45-1 Ramsey Road, Shirley, NY 11967, USA

**Concentration** 0.75 mg/ml

## GENE INFORMATION

**Gene Name** DLL1 delta like canonical Notch ligand 1 [ Gallus gallus (chicken) ]

**Official Symbol** DLL1

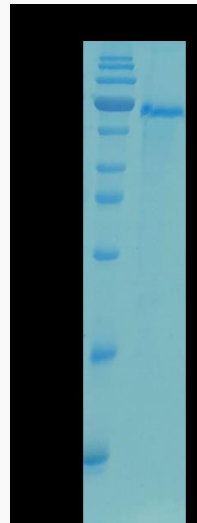
**Synonyms** DLL1

**Gene ID** 395820

**mRNA Refseq** NM\_204973.2

**Protein Refseq** NP\_990304.2

**SDS-PAGE of DLL1-6532C**



 Tel: 1-631-559-9269 1-516-512-3133

 Email: [info@creative-biomart.com](mailto:info@creative-biomart.com)  Fax: 1-631-938-8127

 45-1 Ramsey Road, Shirley, NY 11967, USA