

## Recombinant Human DLL3 protein, His-Avi-tagged

**Cat. No.** DLL3-1355H    **Lot. No.** (See product label)

### SPECIFICATION

<b>Product Overview</b>	Recombinant Human DLL3 protein(Q9NYJ7-1)(Val311-Ala479), fused with C-terminal His and Avi tag, was expressed in HEK293.
<b>Species</b>	Human
<b>Source</b>	C-His-Avi
<b>ProteinLength</b>	Val311-Ala479
<b>Tag</b>	C-His-Avi
<b>Form</b>	Supplied as 0.22µm filtered solution in PBS (pH 7.4).
<b>Bio-activity</b>	Immobilized Human DLL3 Domain (311-479), His Tag at 0.5µg/ml (100µl/Well) on the plate. Dose response curve for Anti-DLL3 Antibody, hFc Tag with the EC50 of 5.4ng/ml determined by ELISA.
<b>Molecular Mass</b>	The protein has a predicted MW of 21.20 kDa. Due to glycosylation, the protein migrates to 25-30 kDa based on Tris-Bis PAGE result.
<b>Endotoxin</b>	Less than 1EU per µg by the LAL method.
<b>Purity</b>	> 95% as determined by Tris-Bis PAGE; > 95% as determined by HPLC.
<b>Storage</b>	Valid for 12 months from date of receipt when stored at -80°C.;Recommend to aliquot

 Tel: 1-631-559-9269    1-516-512-3133

 Email: [info@creative-biomart.com](mailto:info@creative-biomart.com)     Fax: 1-631-938-8127

 45-1 Ramsey Road, Shirley, NY 11967, USA

the protein into smaller quantities for optimal storage. Please do not repeated freeze-thaw cycles.

**Reconstitution**

It is recommended that sterile water be added to the vial to prepare a stock solution of 0.2 ug/ul. Centrifuge the vial at 4°C before opening to recover the entire contents.

**GENE INFORMATION**

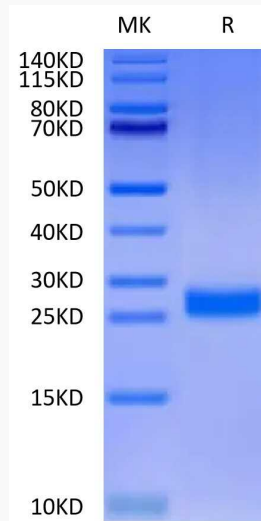
<b>Gene Name</b>	DLL3 delta-like 3 (Drosophila) [ Homo sapiens ]
<b>Official Symbol</b>	DLL3
<b>Synonyms</b>	DLL3; delta-like 3 (Drosophila); delta (Drosophila) like 3; delta-like protein 3; SCDO1; delta3; drosophila Delta homolog 3;
<b>Gene ID</b>	10683
<b>mRNA Refseq</b>	NM_016941
<b>Protein Refseq</b>	NP_058637
<b>MIM</b>	602768
<b>UniProt ID</b>	Q9NYJ7

 Tel: 1-631-559-9269 1-516-512-3133

 Email: [info@creative-biomart.com](mailto:info@creative-biomart.com)  Fax: 1-631-938-8127

 45-1 Ramsey Road, Shirley, NY 11967, USA

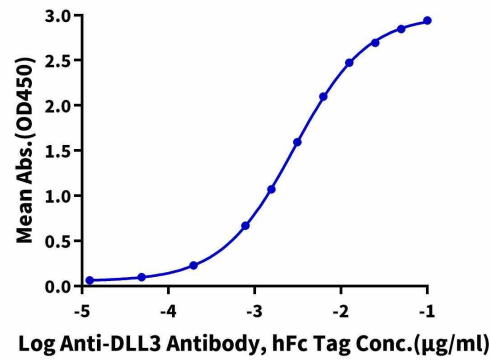
**Tris-Bis PAGE**



**ELISA**

**Human DLL3 Domain(311-479), His Tag ELISA**

0.1µg Human DLL3 Domain(311-479), His Tag Per Well



Tel: 1-631-559-9269 1-516-512-3133

Email: [info@creative-biomart.com](mailto:info@creative-biomart.com) Fax: 1-631-938-8127

45-1 Ramsey Road, Shirley, NY 11967, USA