

## Recombinant Human DLL3 protein, Fc-tagged

Cat. No. DLL3-30H Lot. No. (See product label)

### SPECIFICATION

<b>Product Overview</b>	Recombinant Human DLL3 (Ala27-Leu492) protein was fused to human IgG1 Fc tag at C-terminus and expressed in human 293 cells (HEK293).
<b>Species</b>	Human
<b>Source</b>	HEK293
<b>ProteinLength</b>	Ala27-Leu492
<b>Description</b>	Delta-like protein 3 (DLL3) is a transmembrane protein that belongs to the Delta/Serrate/Lag-2 (DSL) family of Notch ligands. May be required to divert neurons along a specific differentiation pathway. Plays a role in the formation of somite boundaries during segmentation of the paraxial mesoderm. DLL3 protein is expressed on the surface of tumor cells but not in normal adult tissues.
<b>Predicted N Terminal</b>	Ala27
<b>Form</b>	Lyophilized from 0.22 µm filtered solution in Tris with Glycine, Arginine and NaCl, pH7.5, 10% trehalose.
<b>Molecular Mass</b>	The protein has a calculated MW of 75.0 kDa. The protein migrates as 50-60 kDa and 70-80 kDa under reducing (R) condition (SDS-PAGE) due to glycosylation.
<b>Endotoxin</b>	Less than 1.0 EU per µg by the LAL method.

 Tel: 1-631-559-9269 1-516-512-3133

 Email: [info@creative-biomart.com](mailto:info@creative-biomart.com)  Fax: 1-631-938-8127

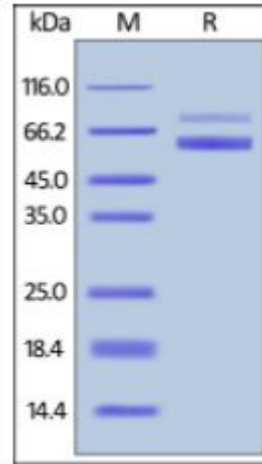
 45-1 Ramsey Road, Shirley, NY 11967, USA

<b>Purity</b>	>90% as determined by SDS-PAGE.
<b>Storage</b>	<p>For long term storage, the product should be stored at lyophilized state at -20 centigrade or lower.</p> <p>Please avoid repeated freeze-thaw cycles.</p> <p>This product is stable after storage at:</p> <p>-20 to -70 centigrade for 12 months in lyophilized state;</p> <p>-70 centigrade for 3 months under sterile conditions after reconstitution.</p>
<b>Reconstitution</b>	It is recommended that sterile water be added to the vial to prepare a stock solution of 0.2 ug/ul. Centrifuge the vial at 4°C before opening to recover the entire contents.

## GENE INFORMATION

<b>Gene Name</b>	DLL3
<b>Official Symbol</b>	DLL3
<b>Synonyms</b>	DLL3; delta-like 3 (Drosophila); delta (Drosophila) like 3; delta-like protein 3; SCDO1; delta3; drosophila Delta homolog 3
<b>Gene ID</b>	10683
<b>mRNA Refseq</b>	NM_016941
<b>Protein Refseq</b>	NP_058637
<b>MIM</b>	602768
<b>UniProt ID</b>	Q9NYJ7

**SDS-PAGE of DLL3-  
30H**



Human DLL3, Fc Tag on SDS-PAGE under reducing (R) condition. The gel was stained overnight with Coomassie Blue. The purity of the protein is greater than 90%.

Tel: 1-631-559-9269 1-516-512-3133

Email: [info@creative-biomart.com](mailto:info@creative-biomart.com) Fax: 1-631-938-8127

45-1 Ramsey Road, Shirley, NY 11967, USA