

Recombinant Human DLL3 protein, His-tagged

Cat. No. DLL3-31H Lot. No. (See product label)

SPECIFICATION

Product Overview	Recombinant Human DLL3 (Ala27-Leu492) protein was fused to His-tag at C-terminus and expressed in human 293 cells (HEK293).
Species	Human
Source	HEK293
ProteinLength	Ala27-Leu492
Description	Delta-like protein 3 (DLL3) is a transmembrane protein that belongs to the Delta/Serrate/Lag-2 (DSL) family of Notch ligands. May be required to divert neurons along a specific differentiation pathway. Plays a role in the formation of somite boundaries during segmentation of the paraxial mesoderm. DLL3 protein is expressed on the surface of tumor cells but not in normal adult tissues.
Predicted N Terminal	Ala27
Form	Lyophilized from 0.22 µm filtered solution in PBS with Arginine, pH7.4, 10% trehalose.
Molecular Mass	The protein has a calculated MW of 50.4 kDa. The protein migrates as 50-66 kDa under reducing (R) condition (SDS-PAGE) due to glycosylation.
Endotoxin	Less than 1.0 EU per µg by the LAL method.

 Tel: 1-631-559-9269 1-516-512-3133

 Email: info@creative-biomart.com  Fax: 1-631-938-8127

 45-1 Ramsey Road, Shirley, NY 11967, USA

Purity	>90% as determined by SDS-PAGE.
Storage	<p>For long term storage, the product should be stored at lyophilized state at -20 centigrade or lower.</p> <p>Please avoid repeated freeze-thaw cycles.</p> <p>This product is stable after storage at:</p> <p>-20 to -70 centigrade for 12 months in lyophilized state;</p> <p>-70 centigrade for 3 months under sterile conditions after reconstitution.</p>
Reconstitution	It is recommended that sterile water be added to the vial to prepare a stock solution of 0.2 ug/ul. Centrifuge the vial at 4°C before opening to recover the entire contents.

GENE INFORMATION

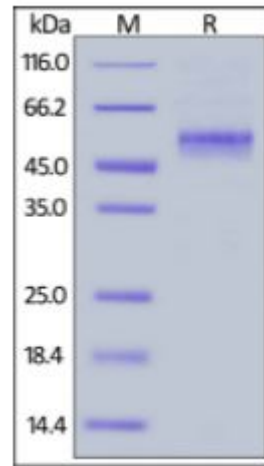
Gene Name	DLL3
Official Symbol	DLL3
Synonyms	DLL3; delta-like 3 (Drosophila); delta (Drosophila) like 3; delta-like protein 3; SCDO1; delta3; drosophila Delta homolog 3
Gene ID	10683
mRNA Refseq	NM_016941
Protein Refseq	NP_058637
MIM	602768
UniProt ID	Q9NYJ7

 Tel: 1-631-559-9269 1-516-512-3133

 Email: info@creative-biomart.com  Fax: 1-631-938-8127

 45-1 Ramsey Road, Shirley, NY 11967, USA

SDS-PAGE of DLL3-31H



Human DLL3, His Tag on SDS-PAGE under reducing (R) condition. The gel was stained overnight with Coomassie Blue. The purity of the protein is greater than 90%.

Tel: 1-631-559-9269 1-516-512-3133

Email: info@creative-biomart.com Fax: 1-631-938-8127

45-1 Ramsey Road, Shirley, NY 11967, USA