

## Recombinant Mouse DLL3 protein, His-tagged

Cat. No. DLL3-5643M Lot. No. (See product label)

### SPECIFICATION

<b>Product Overview</b>	Recombinant Mouse DLL3 protein(O88516-1)(Ala25-Arg488), fused with C-terminal His tag, was expressed in HEK293.
<b>Species</b>	Mouse
<b>Source</b>	HEK293
<b>ProteinLength</b>	Ala25-Arg488
<b>Tag</b>	C-His
<b>Form</b>	Lyophilized from 0.22µm filtered solution in PBS, 200mM Arginine (pH 7.4). Normally 8% trehalose is added as protectant before lyophilization.
<b>Bio-activity</b>	Immobilized Mouse DLL3, His Tag at 5µg/ml (100µl/well) on the plate. Dose response curve for Anti-DLL3 Antibody, hFc Tag with the EC50 of 2.0ng/ml determined by ELISA.
<b>Molecular Mass</b>	The protein has a predicted MW of 49.02 kDa. Due to glycosylation, the protein migrates to 52-60 kDa based on Tris-Bis PAGE result.
<b>Endotoxin</b>	Less than 1EU per µg by the LAL method.
<b>Purity</b>	> 95% as determined by Tris-Bis PAGE; > 95% as determined by HPLC

 Tel: 1-631-559-9269 1-516-512-3133

 Email: [info@creative-biomart.com](mailto:info@creative-biomart.com)  Fax: 1-631-938-8127

 45-1 Ramsey Road, Shirley, NY 11967, USA

**Storage** Reconstituted protein stable at -80°C for 12 months, 4°C for 1 week. Use a manual defrost freezer and avoid repeated freeze-thaw cycles.

**Reconstitution** Centrifuge tubes before opening. Reconstituting to a concentration more than 100 µg/ml is recommended. Dissolve the lyophilized protein in distilled water.

## GENE INFORMATION

**Gene Name** [DLL3 delta-like 3 \(Drosophila\) \[ Mus musculus \]](#)

**Official Symbol** [DLL3](#)

**Synonyms** [DLL3](#); delta-like 3 (Drosophila); delta-like protein 3; delta3; M-Delta-3; drosophila Delta homolog 3; pu; pudgy;

**Gene ID** [13389](#)

**mRNA Refseq** [NM\\_007866](#)

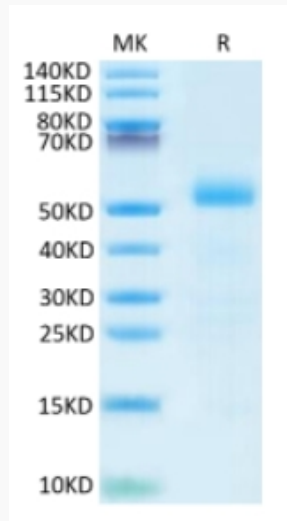
**Protein Refseq** [NP\\_031892](#)

 Tel: 1-631-559-9269 1-516-512-3133

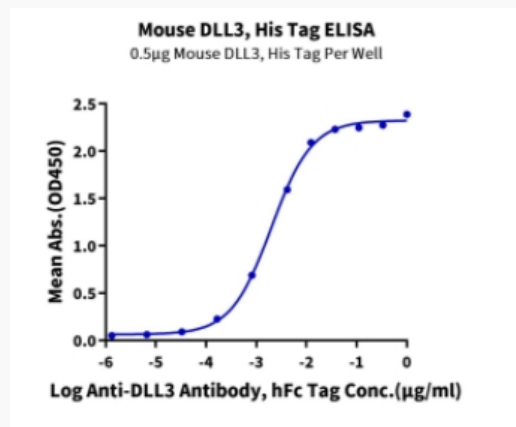
 Email: [info@creative-biomart.com](mailto:info@creative-biomart.com)  Fax: 1-631-938-8127

 45-1 Ramsey Road, Shirley, NY 11967, USA

**Tris-Bis PAGE**



**ELISA Data**



Tel: 1-631-559-9269 1-516-512-3133

Email: [info@creative-biomart.com](mailto:info@creative-biomart.com) Fax: 1-631-938-8127

45-1 Ramsey Road, Shirley, NY 11967, USA